

GULF COAST ASSOCIATION OF GEOLOGICAL SOCIETIES

Transactions Of The  
**41st Annual Convention**

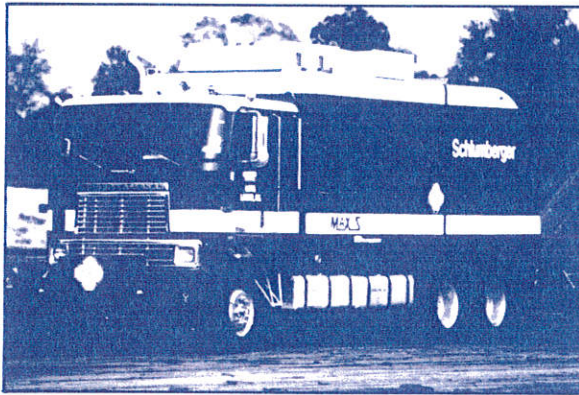
HOUSTON, TEXAS  
OCTOBER 16 - 18, 1991

**G C A G S**  
**1991**  
**HOUSTON, TEXAS**

*Minds of Change*

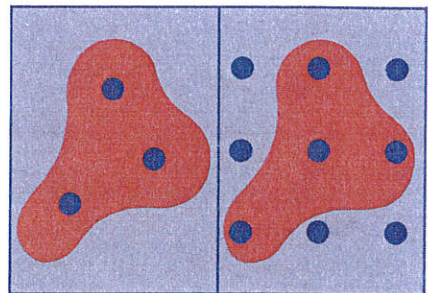


# THE REVOLUTIONARY MAXIS 500\* IMAGING SYSTEM BRINGS CLARITY TO COMPLEXITY.



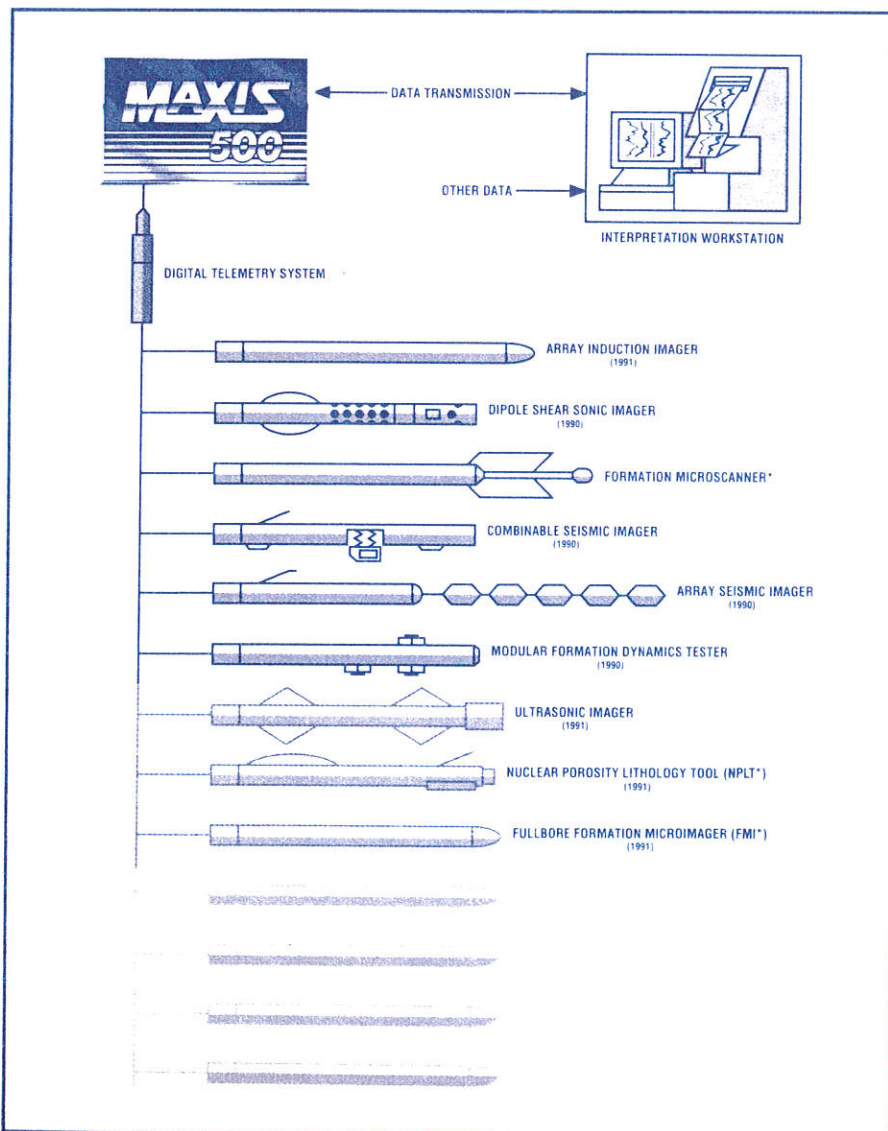
## Fewer wells/better wells.

Integrated with other data, MAXIS imaging will help you assess your reservoir's character so that development can proceed with a few strategically placed wells. With much better performance than wells drilled on a grid. Savings such as that clearly show the value of the new answers you can expect from MAXIS imaging.



Talk to your Schlumberger representative about problems with the complexity of your reservoir. There's no surer help to the right decision than the revolutionary MAXIS imaging system.

\*Mark of Schlumberger

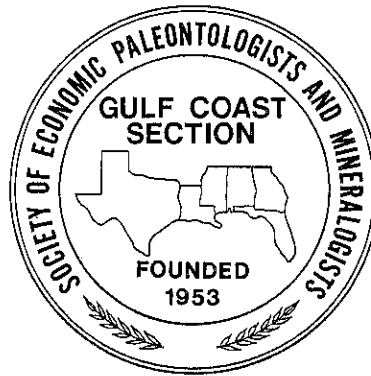
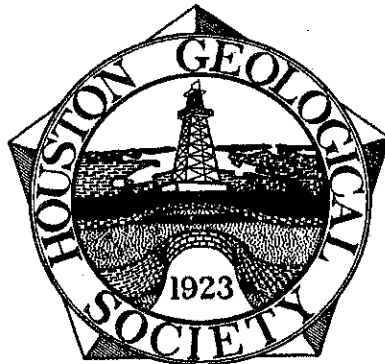
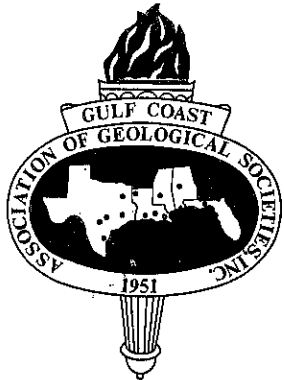


Value is the difference.

# TRANSACTIONS

## GULF COAST ASSOCIATION OF GEOLOGICAL SOCIETIES

A SECTION OF THE AMERICAN ASSOCIATION OF PETROLEUM GEOLOGISTS



VOLUME XLI  
1991

DIETMAR SCHUMACHER  
(GCAGS)

and

NORMAN C. ROSEN  
(GCS/SEPM)

EDITORS

Prepared for

The Forty-First Annual Meeting of the  
GULF COAST ASSOCIATION OF GEOLOGICAL SOCIETIES  
AAPG REGIONAL MEETING

and

The Thirty-Eighth Annual Meeting of the  
GULF COAST SECTION OF THE  
SOCIETY OF ECONOMIC PALEONTOLOGISTS AND  
MINERALOGISTS

October 16-18, 1991

Published at Austin, Texas

*Copyright 1991 by the Gulf Coast Association of Geological Societies.  
No reproduction without permission of the President of GCAGS.*

The Petroleum Industry has given the GCAGS an early Christmas present in Houston. Contributions from our Corporate Sponsors have literally doubled the amount originally budgeted by President Clyde Harrison. Spearheaded by Denny Bartell and Bob Ardell, the grand total has permitted us to reduce the registration cost to \$60 and create an additional 10% cost break for all functions to early registrants (September 20, 1991). This is in response to the contributors who almost unanimously asked that their gifts go towards reducing the cost of the Convention to the registrants and in response to Clyde Harrison's fervent desire that the meeting break as nearly even as possible. The Convention Committees have unselfishly given their time and efforts to making this a successful meeting with no outside assistance other than very helpful suggestions from AAPG Headquarters. We want to thank all the contributors who are listed here and elsewhere throughout the Convention.

**Accurate Reproduction**

**Amoco Production Company**

**Arkla Exploration Company**

**Ashland Exploration, Inc.**

**BP Exploration**

**Richard Brewer and Co.**

**British Gas Services**

**Challenger Minerals, Inc.**

**Chevron U.S.A., Inc.**

**Cockrell Oil Corporation**

**Columbia Gas Development Corp.**

**Conoco, Inc.**

**Dresser**

**Energy Development Corp.**

**Enron Oil & Gas Company**

**Exxon Company U.S.A.**

**Falcon Seaboard Oil Company**

**Freeport-McMoRan Oil & Gas Company**

**General Atlantic Resources, Inc.**

**Global Marine Oil & Gas Company**

**Greenhill Petroleum**

**Hall-Houston Oil Company**

**Houston Creative Connection**  
**Hunt Oil Company**  
**Japex (US) Corporation**  
**Louisiana Land & Exploration**  
**Marathon Oil Company**  
**Mitchell Energy**  
**Nippon Oil Exploration U.S.A. Limited**  
**North Central Oil Corporation**  
**Norcen Explorer, Inc.**  
**Odeco Oil & Gas Company**  
**Oryx Energy Company**  
**Paleo Data**  
**Pennzoil Exploration & Production Company**  
**Phillips Petroleum Company**  
**Joe Samuels & Associates**  
**Sandefor Offshore Company**  
**Schlumberger Well Services**  
**Shell Oil Company**  
**Sonat**  
**Sperry-Sun Drilling Services,**  
**a Baroid Division**  
**Stratex**  
**Taurus Energy**  
**Texaco, Inc.**  
**Texas Crude, Inc.**  
**TOTAL Minatome Corporation**  
**Union Texas Petroleum**  
**Unocal Corporation—Texas Southeastern Region, Louisiana Region**  
**Western Atlas**  
**Western Geophysical**  
**Atlas Wireline Services**  
**Core Laboratories**  
**Zilka Energy Company**

# DEDICATION

## Transactions Volume XLI

*James O. Lewis*

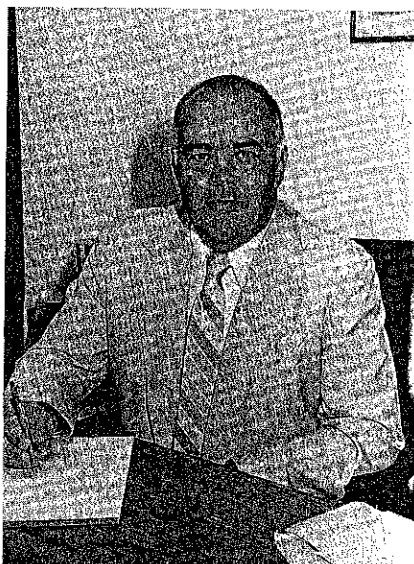
The executive Committee of the Houston Geological Society is proud to dedicate the *1991 Transactions*, Volume 41, of the Gulf Coast Association of Geological Societies to James O. Lewis, in recognition of his distinguished career as a petroleum geologist, leader in the profession and contributor to the knowledge of the geology of the Gulf Coast.

Jim's interest in geology was developed at a very early age. He was born in Owensboro, Kentucky in 1922 and by the age of six years he was learning about rock outcrops around his home from his father and visiting drilling rigs with an uncle who was in the oil business. When he entered the University of Kentucky in 1940, however, he enrolled in mechanical engineering.

He was elected to the Tau Beta Pi honorary engineering society and was proceeding towards a degree when World War II interrupted his academic course. In 1943 he joined the U.S. Navy and served aboard a cruiser and an aircraft carrier in the Mediterranean, north and south Atlantic theaters of operation. Geological texts, found in the ships' libraries that he read during spare time aboard ship, crystallized his latent interest in geology and led him to decide on becoming a geologist.

In 1947 he returned to the University of Kentucky to complete his B.S. degree in mechanical engineering and to study for a masters degree in geology. He was elected to the Sigma Xi society and in 1949 earned a M.S. degree in geology. His first job was with Magnolia Petroleum Company, based in Houston, as a subsurface geologist exploring for oil and gas in the Gulf Coast province. In 1950 he joined independent producer P.R. Rutherford for whom he worked the Gulf Coast and west Texas areas.

In 1955, Jim set up offices as a consultant in Houston where he has continued his practice. He has explored for oil and gas over the entire country, but centers his activity in the Gulf Coast and the southwest Texas area. His efforts have resulted in the discovery of oil fields from the San



Miguel and Olmos sands of the Maverick Basin. He has caused the drilling of several successful horizontal wells on the acreage and has increased the reserves of the area substantially.

Throughout his career, Jim's professional activities have been a litany of involvement. He was President of AAPG during the 1989-90 term and has just completed a year as chairman of AAPG's Advisory Council. He was general chairman of the Gulf Coast Association of Geological Societies 1982 convention in Houston, the largest and most successful GCAGS convention to date. He was well prepared for this job as he had been vice chairman of the preceding GCAGS convention held in Houston in 1973. He was president of the Houston Geological Society and the Society of Independent Professional Earth Scientists and is still a strong supporter of both organizations.

Jim has served the profession both locally and nationally, at all levels from membership in many committees to the leadership of those committees and the organizations of which they are a part. In

1971-1972, he was president of AAPG's Technical Division of Professional Affairs (now the Division of Professional Affairs), and in 1969-1970, was an AAPG distinguished lecturer on the "Practical Applications of the Computer in Subsurface Geology." He has been a pioneer in the field of computer applications to geology and was one of the organizers and lecturers of AAPG's Computer Application School.

Jim has published papers on the deep Frio potential and the Torch Field, Zavala County, Texas. He has presented a number of papers to various conventions and societies. He received the second place Best Paper Award from the GCAGS in 1977 for his paper, "Stratigraphy and Entrapment of Hydrocarbons in the San Miguel Sands of Southwest Texas" and the A.I. Levorsen Award from the Southwest Section of AAPG in 1979.

In recognition of his great service to the profession, both locally and nationally, Jim received the Distinguished Service Award from the Houston Geological Society, which in 1985, also awarded him honorary membership. He was elected to honorary membership in the Gulf Coast Association of Geological Societies in 1983 and that same year was awarded the AAPG Distinguished Service Award. AAPG further recognized Jim in 1986 by electing him to honorary membership.

All of these awards are testimony to the impressive contributions which Jim has made, and is continuing to make, to the profession. He is an energetic, successful explorationist who is equally as energetic in contributing to professional activities. He does everything very well and always stands ready to do more. His dedication has helped us all.

We can take justifiable pride that this *Transactions* of the Gulf Coast Geological Societies is dedicated to James O. Lewis, model geologist, successful explorationist and selfless contributor to the science of geology and the geological profession.

—John J. Amoruso

# TABLE OF CONTENTS

Dedication .....	iii
Report of the President, Clyde Harrison, President .....	x
Report of the President, Denise M. Butler, President .....	xii
Report of the General Chairmen, Dan L. Smith and C.R. "Chuck" Noll .....	xiii
Report of the Editors, Deet Schumacher and Norman C. Rosen .....	xiv
Report of the Program Chairmen, Millis H. Oakes and Dean N. Malouta .....	xv
Financial Aid to Students .....	xv
Distinguished Service Awards Gulf Coast Association of Geological Societies .....	xvi-xviii
Distinguished Service Award Gulf Coast Section-SEPM .....	xix
Outstanding Educator Awards .....	xx-xxiii
Honorary Membership Gulf Coast Section-SEPM .....	xxiv
1990 GCAGS Best Paper Awards and A. I. Levorsen Memorial Award .....	xxv
1990 GCAGS Best Poster Awards .....	xxvii
Best Core Presentation Award .....	xxviii
1990 GCSSEPM Best Paper Awards .....	xxix
Bylaws .....	xlii
Publications .....	xlvi
Guidelines for Submittal of Papers to the GCAGS, Norman C. Rosen .....	1

## Technical Papers

Hydrocarbon Potential of the Baltimore Canyon Trough, Fred Adinolfi .....	1
Detection of Hydrocarbon Venting on the Gulf of Mexico Sea Floor from Determinations of Dissolved Inorganic Carbon and $\delta^{13}\text{C}$ of the Water Column Overlying Seeps, Paul Aharon, Ellen R. Graber, and Harry H. Roberts .....	2
Exploration Applications of Sequence Stratigraphy Applied to the Miocene, High Island Area, Offshore Texas, Sharon Allen, Katrina Cotterill, Peter Vail, Walter Warnardt .....	10
Middle Pennsylvanian Strike-Slip Faulting on the Eastern Edge of the Llano Uplift, Central Texas, D. L. Amsbury and W. T. Haenggi .....	11
Origin and Evolution of Sabine Lake, Texas-Louisiana, John B. Anderson, Fernando P. Siringan, Marco Taviani, and James Lawrence .....	12
The Caroline Street Local Fauna: A Late Pleistocene Freshwater Molluscan/Vertebrate Fauna from Houston, Harris Co., Texas, Saul Aronow, Raymond W. Neck, and William L. McClure .....	17
Megaregional Project Progress Report, Allen J. Bertagne .....	29
Permian Passive Margin Submarine Fan Complex, Karoo Basin, South Africa: Possible Model to Gulf of Mexico, A.H. Bouma, and H. DeV. Wickens .....	30
Paleoecology of a Late Eocene (Bartonian) Vertebrate Fauna, Moodys Branch Formation, Techeva Creek, Mississippi, Sylvester Q. Breard, Jr. ....	43
Determination of Land Loss Rates in Coastal Louisiana, Louis D. Britsch, Joseph B. Dunbar, and E. Burton Kemp III .....	56
Plutonic Salt Genesis and Its Role in Hydrocarbon Generation and Distribution, H.E. Brookby .....	58
Distribution Patterns and Accumulation Rates of Fine-Drained Sediments in Upper Tampa Bay, Florida, Gregg R. Brooks, Larry J. Doyle, Roger Johansson, Andy Squires, Hepsi D. Zsoldos, and Robert H. Byrne .....	60
Geology, Hydrodynamics, Water Pollution, Agriculture and Nutrition, Harrison T. Brundage .....	72

## Technical Papers (Continued)

<b>The Morphology and Evolution of Basins on the Continental Slope Northwest Gulf of Mexico</b> , William R. Bryant, Gregory R. Simmons, Paul Grim .....	73
<b>Origin of the Offshore Louisiana/Mississippi Delta Oils by Reservoir-Source Decoupling</b> , Paul A. Comet, Mahlon C. Kennicutt, II, Norman L. Guinasso, Jr., Guy J. Denoux, Thomas J. McDonald, Roger A. Burke, Jr., and James M. Brooks .....	98
<b>Depositional and Diagenetic Controls on Gas Production from Frio (Oligocene) Sandstones at Monte Christo Field, Hidalgo County, Texas</b> , Thomas L. Cogswell and Noel Tyler .....	83
<b>Joliet Field Thrust Fault Structure and Stratigraphy Green Canyon Block 184, Offshore Louisiana</b> , Douglas Cook and Peter D'Onfro .....	100
<b>Development of a Chronostratigraphic Framework from the Well Log/Seismic Sequence Stratigraphy of Miocene-Pleistocene Depositional Sequences, High Island Area, Offshore Texas, AAPG Transect-Phase II</b> , Katrina Cotterill, Sharon Allen, Francisco De Tagle, Arturo Soto, Chingju Liu, Guillermo Perez-Cruz, Walter Wornardt, Peter Vail .....	122
<b>Taphonomic Signature of Shell Accumulations in Cores: Indicator of Depositional Environments in Holocene Nearshore Sediments, West Central Florida</b> , C. Kelly Cuffe, Ann E. Gibbs and Warren D. Allmon .....	123
<b>The Exploration Potential of the Downdip Yegua in South Texas</b> , G.D. Cummins, B.E. Winkelman, R.N. Rosen .....	132
<b>Sediment Distribution of the Prairie Terrace in the Florida Parishes, Louisiana</b> , Sylvia A. Cureau, J. O. Snowden, and James B. Rucker .....	133
<b>Controls On Facies Distribution of the Downdip Jurassic in Eastern Texas</b> , Andrew J. Davidoff, .....	142
<b>Evidence for a Deep Mesozoic Basin in Central East Texas; Implications for Hydrocarbon Exploration</b> , Andrew J. Davidoff ....	143
<b>Reservoir Models for Meandering and Straight Fluvial Channels; Examples from the Travis Peak Formation, East Texas</b> , David K. Davies, Brian P. J. Williams, and Richard K. Vessell .....	152
<b>Occurrence of Uranium in the Upper Smackover Limestones of the North Louisiana Salt Basin</b> , Miles E. Denham and Thomas T. Tieh .....	175
<b>Correlation Trends in Thin-Bedded Turbidites, Jackfork Group, Degray Lake, Arkansas</b> , Michael B. De Vries and Arnold H. Bouma .....	184
<b>Stratigraphic Characteristics and Sandstone Distribution of the Hackberry Depositional System (Mid Oligocene), S.E. Texas and S.W. Louisiana: A Sand-Rich Slope-Fan Complex</b> , Michael J. DiMarco, R. Craig Shipp .....	187
<b>Basement Rocks and Structure, Northeast Gulf of Mexico</b> , Laura M. Dobson and Richard T. Buffler .....	191
<b>Lower Tuscaloosa and Frio of Southwestern Mississippi</b> , Sandra G. Dowty and Jack S. Moody .....	207
<b>Depositional, Diagenetic, and Structural Controls on Reservoir Properties of Low-Permeability Sandstone, Travis Peak Formation, East Texas</b> , Shirley P. Dutton, Stephen E. Laubach, and Robert S. Tye .....	209
<b>Sea Level High Stand Shales and Thin Stacked Deltas; Paleocene Middle Wilcox of Central Louisiana and Southwest Mississippi</b> , John B. Echols .....	221
<b>Control of Depositional Environments Eustasy, and Gravity and Salt Tectonics on Sandstone Distribution in an Unstable Shelf Edge Delta, Eocene Yegua Formation, Texas and Louisiana</b> , Marc B. Edwards .....	237
<b>Geologic and Engineering Field Study of the Northeast Hitchcock Field, Galveston County, Texas</b> , David L. Egleston Jr., Anne Verzeletti and Saad Al-Haddad .....	253



## Technical Papers (Continued)

<b>Rocks and Money, Laura Kay Ethetton</b> .....	254
<b>Stratigraphic Framework, Structural Styles and Seismic Signatures of Downdip Yegua Gas-Condensate Fields, Central Wharton County, Texas Gulf Coast, Thomas E. Ewing and Grant Fergeson</b> .....	255
<b>Isotopic Evidence for Petroleum-Derived Carbonates in the Gulf of Mexico, Jiasong Fang</b> .....	276
<b>Preliminary Age Determinations for New Deep Gulf of Mexico Basin Seismic Sequences, Jianhua Feng and Richard T. Buffler</b> . . .	283
<b>A Mathematical Model to Predict Estimated Future Recoverables, William A. Fidler and Larry Pierce</b> .....	291
<b>Late Quaternary Deweyville Interval Superfloods, Sherwood M. Gagliano</b> .....	298
<b>Berwick Field: the Geologic Half of the Seismic Stratigraphic Story in the Lower Tuscaloosa, Mississippi, Robert K. Garrison and Robert Chancellor</b> .....	299
<b>Diagenetic Variability in Middle Frio Formation Gas Reservoirs (Oligocene), Seeligson and Stratton Fields, South Texas, Jeffrey D. Grigsby and Dennis R. Kerr</b> .....	308
<b>A Sedimentological Explanation for the Distribution of Archaeological Sites in a Meander Belt as Stated by the "Relict Channel Rule," Paul V. Heinrich</b> .....	320
<b>Tectonic Evolution of the Northern Caribbean/Bahamas/Florida Region: Implications for Exploration, Mark R. Hempton</b> .....	321
<b>Cambro-Ordovician Subsurface Stratigraphy of the Black Warrior Basin in Mississippi, Kevin S. Henderson</b> .....	322
<b>Making an Old Gem Sparkle: The Rejuvenation of McAllen Ranch Field, Texas, D.P. Hill, R.B. Lennon and C.L. Wright</b> .....	325
<b>Ichnofacies of the Late Jurassic Smackover "C" Sandstone, Claiborne and Webster Parishes, Louisiana: Indication of the Environment of Deposition, Stephen R. Howard and David J. Davies</b> .....	336
<b>Identification of Ancient Storm Events in Buried Gulf Coast Sediments, Wayne C. Isphording, Gregory W. Isphording</b> .....	339
<b>Pollen and Spores from the Type Section of the Middle Eocene Stone City Formation, Burlison Co., Texas, John G. Jones and Judith A. Gennett</b> .....	348
<b>Recognition and Implications of Volcanic Glass Detritus in the Fluvial Deposits of the Middle Frio Formation, South Texas, Dennis R. Kerr and Jeffrey D. Grigsby</b> .....	353
<b>Sequence Stratigraphy of the Smackover Formation in the Northern Half of the Manila Embayment, Southwestern Alabama, David T. King, Jr. and E. Glenn Hargrove</b> .....	359
<b>Sedimentary Facies, Sea-Level History, and Paleogeography of the Upper Cretaceous (Maastrichtian) Providence Sand, Central and Eastern Coastal Plain of Alabama, David T. King, Jr., Michael C. Skotnicki, and Janet P. Abbott-King</b> .....	364
<b>Lowstand Deep-Water Clastic Fans and Related Depositional Systems: Terminology, Characteristics, Processes, and Variability, V. Kolla and R. Martin</b> .....	373
<b>Pore Facies of Smackover Carbonate Reservoirs in Southwest Alabama, David C. Kopaska-Merkel and Steven D. Mann</b> .....	374
<b>Sparta B Sandstones (Eocene), Fordoche Field, Pointe Coupee Parish, Louisiana—A Compartmentalized, Barrier-Island Oil and Gas Reservoir, Paul R. Krutak and W. Clay Kimbrell</b> .....	383
<b>Seismic Resolvability of Individual Sand-Filled Channels in the Lower Pennsylvanian Jackfork Formation, Arkansas: Model Applicability for the Gulf Coast, Gerald J. Kuecher and Arnold H. Bouma</b> .....	405

## Technical Papers (Continued)

<b>Organic-Rich, Radioactive Marine Shale: A Case Study of a Shallow-Water Condensed Section, Cretaceous Formation, Alberta, Canada, Dale A Leckie, Chaitanya Singh, Fariborz Goodarzi, and John H. Wall</b> .....	406
<b>Approaches to Finding New Gas in Mature Fields: An Example from the Middle Frio, Onshore Texas Gulf Coast Basin., R.A. Levey, R.R. Ray, R. Single, R.I. Finley</b> .....	407
<b>Transgressions and Regressions in the Barataria Bight Region of Coastal Louisiana, Douglas R. Levin</b> .....	408
<b>Sedimentology of A Modern Point Bar At Raven Camp on the Red River, Central Louisiana, Brian E. Lock and Catherine E. Bishop</b> .....	432
<b>Massive Gas Deposits (Clathrates) in the Gulf of Mexico, Allen Lowrie and Michael Max</b> .....	442
<b>Hydrocarbon Trap Types and Deformation Styles Modeled Using Quantified Rates of Salt Movement, Louisiana Margin, Allen Lowrie, Zhihuai Yu, and Ian Lerche</b> .....	445
<b>Applications of Design in the Energy Industry, Carol M. Lucas and Sandy Astrup</b> .....	460
<b>Geologic Framework and Hard Mineral Resources of Petit Bois Pass and Adjacent Inner Shelf, Mississippi-Alabama, Randolph A. McBride, Mark R. Byrnes, Shea Penland, and Jack L. Kindinger</b> .....	461
<b>Fabric and Origin of Gypsum Sand Crystals, Laguna Madre, Texas, Earle F. McBride, Hiromi Honda, and Antar A. Abdel-Wahab</b> .....	462
<b>Hinge Line Growth Faults and the Expanded Frio Formation of the Coastal Bend Area of Texas, James A. McCarthy</b> .....	463
<b>Revised Mapping of Surface Faults, East Baton Rouge Parish, Louisiana, Richard P. McCulloh and Whitney J. Autin</b> .....	473
<b>Upper Jurassic Smackover Oil Plays in Alabama, Mississippi and the Florida Panhandle, Ernest A. Mancini, Robert M. Berry H. Tew, David C. Kopaska-Merkel, and Steven D. Mann</b> .....	475
<b>The Subsurface Upper Frio Formation of Southeastern Louisiana and Correlations to the Paynes Hammock and Catahoula Formations in East-Central Mississippi, Donald J. Marlin and William H. Schramm</b> .....	481
<b>Lower Wilcox Submarine Canyon Channel Sandstones Sheridan Field, Colorado County, Texas, Randall S. Miller</b> .....	488
<b>Carbonate Hard Grounds: Their Usage as Stratigraphic Markers and Their Significance in Porosity Development in the Lower Cretaceous Edwards Limestone, Word Field Complex, Lavaca County, Texas., S.P. Moore and S.E. Akturk</b> .....	495
<b>Foraminiferal Distribution in the Saratoga Chalk of Arkansas, William R. Morgan and Charles L. McNulty</b> .....	496
<b>New Depositional Model for the Mississippi River Delta Plain, Shea Penland, John R. Suter, Randolph A. McBride and Ron Boyd</b> ..	515
<b>The GCAGS, 1951-1990—A Salute to Forty Years of Progress, David E. Pope</b> .....	517
<b>On the Origin of the Gulf Coast Neogene Oils, Leigh C. Price</b> .....	524
<b>Gulf Coast Oil and Gas Board Hearings: Credibility of Geological Expert Witnesses, William E. Pritchard, III</b> .....	542
<b>Sedimentology and Biostratigraphy of Cores in Miocene Deposits, Offshore Louisiana, Gulf of Mexico, Andy Pulham, Julie Pearce and Tom Byrd</b> .....	556
<b>Slope Sedimentation in the Lower-Mid Pleistocene, Offshore Louisiana, North-East Gulf of Mexico, Andy Pulham, Carl Evans, Peter Kahn and Phil Fish</b> .....	558

## Technical Papers (Continued)

<b>Depositional Environments and Reservoir Compartmentalization within the Frio Zone 21-B Reservoir, Tijerina-Canales-Blucher Field, South Texas.</b> James R. Reistroffer and Noel Tyler .....	559
<b>Stratigraphic-Structural Interpretation and Reservoir Characterization of Lavaca Bay Field, Calhoun County, Texas.,</b> Jose U. Ricoy .....	561
<b>Seismic Expression and Directly Observed Characteristics of Seep-Related Features, Northern Gulf of Mexico Continental Slope,</b> Harry H. Roberts and Thomas W. Neurauter .....	562
<b>Results from First Direct Observation and Sampling of a Gulf of Mexico Basin Floor Salt Dome, Green Knoll, Harry H. Roberts, Paul Aharon, and James Mueller .....</b>	563
<b>Significance of Discoloration in Arenaceous Foraminifera,</b> Rashel N. Rosen .....	564
<b>Hydrocarbon Seepage and Salt-Dome Related Carbonate Reservoir Rocks of the U.S. Gulf Coast,</b> Roger Sassen, Penny Grayson, Gary Cole, Harry H. Roberts, and Paul Aharon .....	570
<b>Age and Petrology of the Jackson Dome Igneous-Volcanic Complex, Mississippi: Implications for the Tectonic History of the Mississippi Salt Dome Basin,</b> J.A. Saunders and D.W. Harrelson .....	579
<b>Coastal Lithosomes of the North and Central Texas Coast and Inner Continental Shelf,</b> F. P. Siringan, J. B. Anderson, L. R. Bartek, and M. A. Thomas .....	580
<b>Contemporaneous Normal Faulting and Folding in West White Lake Field, Vermilion Parish, Louisiana,</b> R. O. Steinhoff .....	581
<b>Structural Style of Salt/Mini-Basin Systems: Lower Shelf and Upper Slope, Central Offshore Louisiana,</b> H. S. Sumner, B. A. Robison, W. K. Dirks, J. C. Holliday .....	582
<b>The "Gulf of Mexico" Late Holocene Sea Level Curve and River Delta History,</b> William F. Tanner .....	583
<b>Geologic Framework of Norphlet and Pre-Norphlet Strata of the Onshore and Offshore Eastern Gulf of Mexico Area,</b> Berry H. Tew, Robert M. Mink, Steven D. Mann, Bennett L. Bearden, and Ernest A. Mancini .....	590
<b>Submarine Canyon Cut and Fill Morphology and Facies in the Upper Pliocene of the Texas Shelf,</b> Kenneth J. Thies, Bruce E. Bowen, John H. Beard and Mathew L. Bognar .....	601
<b>Petroleum Classification Based on the Ratio of Sulfur to Nitrogen: Application in the East Texas Basin,</b> K. F. M. Thompson, ....	602
<b>Salt Basins of Western Europe and Gabon, West Africa: Which Is a Gulf of Mexico Analog?</b> D. A. Thompson, I. Lerche and J. J. O'Brien .....	603
<b>Salt Dynamics: Excess Maturity, Timing and Flow-Speed,</b> R.O. Thomsen, and I. Lerche .....	610
<b>Middle Miocene Stratigraphic Traps, Southeast Manila Village Field, Louisiana,</b> Kandy L. Thorn, Rod A. Norvell, and George C. Flowers .....	611
<b>Applied High Definition Seismic Stratigraphy: Continental Slope, Northern Gulf of Mexico,</b> Peter K. Trabant .....	627
<b>The Geological Role in Reserve Acquisitions,</b> Steven R. Trudeau .....	628
<b>An Integrated Approach to Exploration and Development in the 90s: Well Log-Seismic Sequence Stratigraphy Analysis,</b> Peter R. Vail, and Walter Wornardt, Jr. ....	630
<b>Surficial Geology of the Houston Area: An Offlapping Series of Pleistocene (&amp; Pliocene?) Highest-Sealevel Fluviodeltaic Sequences,</b> Dewitt C. Van Siclen .....	651

## Technical Papers (Continued)

---

<b>The Flank Shallow Piercement Plays of Mississippi, John Warner and Jack Moody</b> .....	667
<b>Prediction of Facies Distributions in Prograding Clastic Shelf Sequences: A Non-Waltherian Model Based on Sediment Mechanics, Paul A. Washington and Steven A. Chisick</b> .....	669
<b>Hydrocarbon Generation and Migration Routes in the East Texas Basin, William A. Wescott and William C. Hood</b> .....	675
<b>Computer Modeling of Hydrocarbon Migration Pathways and Fluid Flow Histories from Carbon Isotope Anomalies in Gulf Coast Exploration Wells, D. F. Williams, I. Lerche, and Z. Yu</b> .....	676
<b>Behavior of Inorganic Constituents During Early Diagenesis of Peats, James J. Willis, Alan M. Bailey, and Arthur D. Cohen, . . . . .</b>	690
<b>Predicting Fracture Connectivity and Intensity within the Austin Chalk From Outcrop Fracture Maps and Scanline Data, David V. Wiltschko, Kevin P. Corbett, Mel Friedman and Jih-hao Hung</b> .....	702
<b>Revision of the Plio-Pleistocene Cycles and Their Application to Sequence Stratigraphy and Shelf and Slope Sediments in the Gulf of Mexico, Walter W. Wornardt Jr. and Peter R. Vail</b> .....	719
<b>Systems Tracts: Variations in Thickness and Lithofacies With Paleobathymetry, Walter W. Wornardt Jr. and Peter R. Vail</b> .....	745
<b>A New Approach to Lithologic and Sedimentary Structure Analysis from Well Logs, Robert A. Young and Harold Darling</b> .....	746
<b>Salt Dynamics: Simulation of Mushroom Caps on Salt and an Application in Barents Sea, Norway, Z. Yu and I. Lerche</b> .....	747

# REPORT OF THE PRESIDENT

## Gulf Coast Association of Geological Societies

*Clyde Harrison, President*

It has been nine years since Houston hosted the GCAGS Convention and it is with a great deal of pride that we welcome all delegates back to the Petroleum Capitol of the World. This is our sixth time to host the annual meeting. The theme of this year's Convention, "The Winds of Change," has a significant meaning to all of us, because our profession has and will continue to experience dramatic changes in technology, in economics, as well as in social, political, and professional matters. Geologists' ability to survive and prosper will depend on how well we work together to adapt to these changes.

We are dedicating the 1991 *Transactions* to one of Houston's finest. James O. Lewis exemplifies the individual we all strive to be: a successful geologist, a dedicated professional and a leader of men. Congratulations Jim, you have contributed much to our profession and you have made us very proud.

Houston's geological community is blessed with a deep pool of talent and commitment. This year's Convention Co-Chairmen, Chuck Noll and Dan Smith have assembled an unbeatable team and have orchestrated a highly efficient convention organization. The outstanding work done by this wholly volunteer group is chronicled elsewhere in this publication; however, on behalf of the entire GCAGS, we wish to express our gratitude to Dan, Chuck, and their magnificent convention team for a job well done.

The past year has been very active and rewarding for the Association. Summarized below are some of the highlights of this year's accomplishments and those responsible.

The GCAGS Representative to the AAPG Advisory Council is Bob Sabate, who served as our vital liaison with the national organization in Tulsa. The Awards and Nominations Committee, headed by Gary Lauman, selected the recipients of this year's awards which included three Distinguished Service Awards and four Outstanding Educator Awards. The Outstanding Educator Awards are being given for the first time and are the Association's means of recognizing some of the truly exceptional college and university



faculty whose work has benefited the geological sciences and GCAGS.

The diligence of Gerald Cooley's Finance Committee has assured the Association's excellent financial condition, with cash assets of about \$600,000. We are fortunate that our monetary stability continues to allow us to fund the projects for which the Association was founded.

Thanks to our Historian, Dave Pope, the history of GCAGS's first 40 years is published in this year's *Transactions*. This is an excellent chronicle by a distinguished member who has contributed much to the creation and development of the Association.

We wish to salute Lane Sartor as incoming Chairman of the Long Range Planning Committee. Lane replaces Ed Roy who served GCAGS with distinction for so many years. The Long Range Planning Committee faces some challenging and exciting issues, including:

(1) GCAGS involvement in a proposed new *Tectonic Map of the Gulf of Mexico Basin*; (2) A proposed joint HGS/GSH *Seismic Atlas of the Gulf Basin*; and (3) A much needed review of the sharing formula between GCAGS and local host societies on convention revenues. A thorough analysis and policy recommendations on each of the foregoing issues will greatly affect the Association for several years to come.

The most important continuing function of this Association is the publication of geological literature, consequently, Bob Boyer's Publication Committee is probably our busi-

est entity. For the first time since 1986, our publication sales are up. Total gross sales for 1990 were \$24,541, an increase of \$6,000 over 1989, and the first quarter of 1991 was the best since 1986. Based on information provided by Bob and his committee, GCAGS is proceeding with plans to publish Volume 6 of the *Bibliography of Gulf Coast Geology*, covering 1985 - 1990.

Relying on recommendations by the Committee on Financial Aid to Students, chaired by Valerie Ewing, the Association granted \$27,408 in financial aid to 21 students at 12 universities. This is a very important GCAGS program and we appreciate the Committee's efforts in screening these applicants.

All twelve of our Member Societies worked hard during the year to serve their membership, their profession and their local communities. The fact that they have accomplished so much under very trying industry economic conditions is a tribute to the dedication of each society's leadership. We wish to give special recognition to the Corpus Christi Geological Society for their participation with other industry societies in a Christmas event benefiting the local United Way. Perhaps this will serve as an example to other GCAGS societies toward supporting local charities, and becoming better rounded community citizens.

Early this year the business of the Association was streamlined by the purchase of a new computer system. Housed in the Executive Secretary's office in Austin, the new system will not only facilitate the day-to-day functions of our office, but will provide a greater capability to aid the officers, directors and member societies in their functions. The system includes a McIntosh II SI, a laser printer, a flatbed scanner, a modem and the accompanying software.

At last year's Annual Meeting in Lafayette the Board of Directors established the GCAGS Matching Scholarship Fund. Under this provision, the Association agreed to match scholarship funds donated by members to their respective societies, up to \$10,000 per society, for a period of one year ending October, 1991. We are happy to report that the program has been very successful four member societies have applied for and received a total of \$35,680 in matching funds. Most of the other societies are in the process of establish-

ing local scholarship funds which will qualify for this program.

The most difficult part of a President's report has to be thanking all of those who served GCAGS during the year. There is simply not adequate space. Besides those mentioned above we wish to thank all of the Officers and Directors of the Association, including Peter Gray, my predecessor; John Marble, Vice President and heir to this job; Larry Bartell, Treasurer; and Howard Kiatta, Secretary and Crisis Chairman. Special recognition must go to Birdena Schroeder, our Executive Secretary. She has done a magnificent job of establishing our files, connecting our diverse orga-

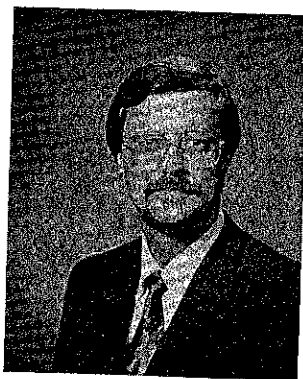
nization through a central liaison, setting up our new computer system, managing our publication sales and, notably, helping the President's job function under some very difficult circumstances.

We wish to gratefully acknowledge all of the oil companies and service companies who supported our 1991 Convention through financial contributions. Because of their support, we have been able to reduce our registration fees and keep the cost of the *Transactions* at a reasonable level. We recognize that these are tough times in our industry. The sacrifices made by these companies to support the GCAGS is deeply appreciated. We hope that

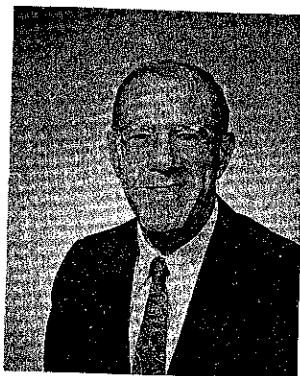
each and every geologist will take the time to personally thank these contributors who are listed herein.

Finally, it has been a great honor to serve as President of the Gulf Coast Association of Geological Societies. Thank you for this honor. I thank you additionally for the deep concern and assistance provided by so many during the past several months. I know that the GCAGS will continue to prosper and to serve our profession and the science of geology, and I am very happy to be a part of this effort.

*Clyde E. Harrison  
with Howard W. Kiatta*



**VICE PRESIDENT**  
John C. Marble



**SECRETARY**  
Howard W. Kiatta



**TREASURER**  
Larry Bartell

# REPORT OF THE PRESIDENT

## Gulf Coast Section

### Society of Economic Paleontologists and Mineralogists

*Denise M. Butler, President*

Welcome to Houston and to the 41st annual meeting of the G.C.A.G.S. and the Gulf Coast Section of SEPM. The theme of this year's meeting is *Winds of Change—Spiraling Technology*, and how appropriate it is for these are indeed times of change. It is only through meetings and conferences like this one that we can hope to keep pace with the rapid technological advances in our field. It is difficult to acknowledge everyone who has made this year's meeting possible but I would like to especially thank the people who have worked so hard on the behalf of the GCS-SEPM: Mike Nault, Vice Chairman, Bud Oakes, Program Chairman, Norm Rosen, Editor and Skip Breard, Judging and Awards Chairman. The hard work and cooperative efforts of these people and GCAGS committee members have made this meeting one that Houston can be proud of. Special thanks are also extended to the General co-chairmen, Dan Smith and Chuck Noll.

In the continuing tradition of service to the geologic community, the Gulf Coast Section of SEPM has had another active and productive year. The 1990 GCS-SEPM Foundation Research Conference titled *Sequence Stratigraphy as an Exploration Tool: Concepts and Practices in the Gulf Coast* was such an overwhelming success that it was repeated in June of 1991. A combined total of 973 people attended the two conferences held in Houston. The success of this meeting was primarily due to the outstanding technical program put together by John Armentrout and his program committee and the editing expertise of Bob Perkins, Executive Director of the Foundation. They can be proud of the fact that this conference is by far the most successful one ever put on by the Foundation.

There is no rest for the weary, however, as we are busy putting the finishing touches on the 1991 GCS-SEPM Foundation Research Con-



ference which is titled *Coastal Depositional Systems in the Gulf of Mexico: Quarternary Framework and Environmental Issues*. Shea Penland, Program Chairman, along with committee members, Harry Roberts, Bob Morton, Albert Hine, Jeffress Williams, and Chip Groat have put together an outstanding program of oral and poster presentations from nationally known experts on coastal and environmental geology. The conference will be held in Houston at the Adam's Mark Hotel on December 8-11, 1991 and a program volume of extended abstracts will be available at the conference. This year there will also be a pre-conference field trip sponsored by the Louisiana Geological Survey and led by John Suter of Exxon. It will originate in New Orleans on December 6 and end up in Houston on December 8th in time for the ice breaker.

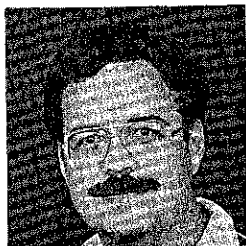
The GCS-SEPM Foundation Research Conferences are made possible by the financial support of the Foundation and by the organizational support of the Executive Director, Bob Perkins and the Trustees, William P. Ventress, Clarence Albers and Art Waterman. The support and guidance of these individuals is a

key ingredient for the success of the Foundation activities. I would like to thank the many individual and corporate contributors whose donations have enabled us to maintain the high quality of our conferences and publications.

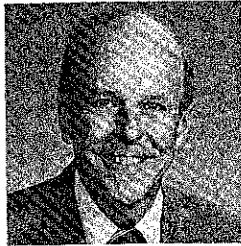
I would like to extend my appreciation to BP Exploration for supporting my involvement with the section activities over the last few years. They have been very generous in their financial support and allowing me the time and resources to serve the section as President. I would also like to thank my fellow officers for their hard work and support during the past year: Mike Nault (President-Elect), Charles Smith (Vice President), Nancy Engelhardt-Moore (Secretary), Kurt Geitzenauer (Treasurer) and Sheila Barnette (Past President). A special thanks goes to Bob Perkins, Executive Director of the Foundation, he really is the glue that holds the section and the Foundation together. His hard work and dedication are responsible for the high quality of our conferences and publications.

This year has been one of both achievement and loss for the Gulf Coast geological community. The recent death of Doris Curtis, one of our most loved and respected members, has been a great loss. Doris was awarded the GCS-SEPM Honorary Membership in 1977 and has also served as Chairman of the GCS-SEPM Foundation Trustees. Doris will always be remembered for her tremendous contributions to the field of geology and for her kind and generous nature that endeared her to us all.

It has been a busy and exciting year for the Gulf Coast Section and I am grateful for the opportunity to serve with such an outstanding group of people. My thanks to the membership for allowing me the privilege to serve as your President.



**PRESIDENT ELECT**  
Michael Nault



**VICE PRESIDENT**  
Charles C. Smith



**PAST PRESIDENT**  
Sheila Barnette



**SECRETARY**  
Nancy Engelhardt-Moore

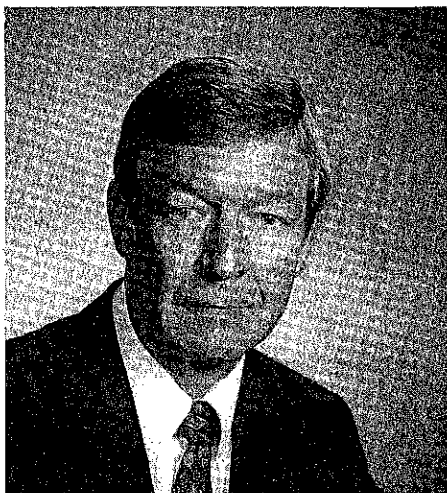


**TREASURER**  
Kurt Geitzenauer

# REPORT OF THE GENERAL CHAIRMEN

## Forty-First Annual Meeting—1991

*Dan L. Smith and C.R. "Chuck" Noll*



Dan L. Smith



C.R. "Chuck" Noll

On behalf of the Houston Geological Society, we are pleased to welcome you to Houston and the 41st annual meeting of the Gulf Coast Association of Geological Societies. In addition to being the oil capital of the world, the NASA Space Program command center, and the location of an internationally renowned medical center, we are also home to the world's largest local geological society.

The Houston Geological Society, with a current membership of over 5,500, was founded in 1923 and has a long history of breeding our share of world class geologists who have contributed significantly to the science. This wealth of talent enabled us this year to stage the entire convention without outside assistance. We chose to have co-chairmen instead of the usual single chairman because of the massive work load and responsibilities involved. This worked extremely well and we highly recommend it for future conventions.

We are very pleased to offer nearly all of the convention activities at one location, the magnificent Adams Mark Hotel, located in the heart of the west side entertainment district. This is really the only convention hotel in Houston that could handle our group. This facility is the perfect size for our Convention and can accommodate us under one roof. The Adams Mark is close to the famous Galleria Shopping Center and is near many excellent restaurants and entertainment facilities. The Carillon Center, adjacent to the hotel, features restaurants with a variety of selections including Spellbinders Comedy Club, the Great Caruso, two Mexican food restaurants and Matahari's which specializes in Indonesian cuisine.

A major key to survival during these times is flexibility. Therefore, it is appropriate that the theme for this year is WINDS OF CHANGE, with a whirlwind symbolizing the rapidly changing energy industry and the changing opportunities for Geologists. In recent years many Petroleum Geologists have switched to other specialties. The science of petroleum geology itself is evolving rapidly to meet new demands for more efficient energy exploration in the face of ever fluctuating economic signals, and it has become increasingly difficult to keep up with technological innovations. To survive we must be flexible and keep up with new geologic concepts. We must be willing to change our goals if circumstances so dictate, or to find new methods for reaching our goals if necessary.

Our objectives this year are to focus on the future of geology and the business outlook for 1992 and beyond. We have put together a timely and attractive program with emphasis on our rapidly changing profession. The GCAGS oral sessions are dedicated to regional and field studies of the Gulf Coast, salt dynamics, sequence stratigraphy, hydrocarbon indicators, reserve determination techniques,

and a special session on international geology with several papers illustrating Gulf of Mexico analogs. SEPM oral sessions include emphasis on sedimentation and sea level changes, biostratigraphy, paleo environments, depositional patterns, diagenesis, and isotope studies.

The poster and core sessions are greatly expanded and are published in the transactions again this year. These sessions are now a very significant and popular part of the annual convention. The poster and core format provide a forum for face-to-face exchange of ideas which enhance the opportunity for creative thinking.

We are offering seven very practical short courses and eleven field trips, the most ever staged by GCAGS. Partly because of this very ambitious and aggressive effort, the steering committee has decided that convention registration is not required for participation. The field trips in particular have not been well attended at the past two conventions, but we anticipate that the large number of geologists in Houston would make a big difference this year. A convenient and varied Exhibit Hall is located in the Adams Mark and access to every activity is at your Hotel front door. Alumni activities are mostly at the "Mark" as well as interview space.

The entertainment activities start up with the ever popular Icebreaker Cocktail Party in the Exhibit Hall and Ballroom on Wednesday night and continue with a Texas roundup rodeo and barbecue on Thursday night with dancing and entertainment in an indoor arena located at Simonton, just west of Houston. Athletic and sporting events include a golfing package at Raveneaux Golf Club, a tennis tournament for both men and women (a first for GCAGS) at the Westside Tennis Center, a 5K run, sporting clays and a racquetball tournament. Also, a complete spouse's program is being offered which features a luncheon at the Houston Junior League.

Preparation for this convention began more than three years ago. We would like to express our sincere thanks to the committee chairmen and members who gave so willingly of their time to make this convention a reality. We were indeed fortunate to have a very large pool of talent to draw upon in the Houston geological community. Approximately two hundred people have worked tirelessly on twenty-seven committees to achieve our goals.



We also want to thank Clyde Harrison, GCAGS President, who made many helpful suggestions and was continually supportive. We want to give special thanks to Secretary Howard Kiatta and Treasurer Larry Bartell who handled their responsibilities in a very

professional manner. The five of us met innumerable times as the Steering Committee to identify and tackle problems and to set the course of the convention.

We all join in wishing you a pleasant and memorable stay in Houston. Take advantage

of the Geological programs available with special emphasis on the everchanging techniques and tools of our profession. We truly are experiencing "Winds of Change." These changes will continue to create challenges and opportunities for each of us.

## REPORT OF THE EDITORS

### 1991 Transactions



**Deet Schumacher**  
Editor, GCAGS

The Gulf Coast basin is one of the oldest hydrocarbon producing areas in the United States, and it still holds a significant portion of the country's remaining petroleum potential. Despite the area's long history of petroleum exploration and production, much remains to be learned about the occurrence of oil and gas in this province.

Over the past four decades, the GCAGS *Transactions* have become recognized as the preeminent reference for Gulf Coast explorationists. This year's *Transactions* continues the trend of excellence established by past contributors to this series. The papers and abstracts published here cover a wide range of exploration and development topics, and most include previously unpublished data and interpretations. These papers represent a broad range of views on topics of great importance to Gulf Coast producers and explorationists alike. It is hoped that the data and interpretations presented here will lead to the formulation of more effective exploration and development strategies by providing a better understanding of the processes that have led to the formation and occurrence of oil and gas in the Gulf Coast.

We greatly appreciate the assistance given by the following individuals who provided critical reviews of the GCAGS manuscripts and extended abstracts published in this volume. Their conscientious and painstaking work has greatly improved the scientific content and value of these *Transactions*.

Allan Balla (BHP), Jim Barr (Pennzoil), Kathy Barrie (Pennzoil), Nancy Benthien (Marathon), Jack Burgess (Chevron), Ted Donoho (Unocal), Nancy Dring (Exxon), Charles Feazel (Phillips), Fred Feitshans (Consultant), Jerry Gill (BHP), Larry Holcomb (BHP), Jack Leedy (Pennzoil), Bob Lieber (Consultant), Jeannie Fisher Mallick (Pogo), Keith McKeel (Unocal), Ron Meers (BHP), Mary Page (Consultant), Rose Mary Parker (Pennzoil), Barbara Radovich (Pennzoil), Barry Rava (Pennzoil), Mary Shih (Unocal), John Spaid (Marathon), Joe Stires (BHP), Mike Switek (Consultant), Gilbert Taylor (BHP), Al Wadsworth (Independent), Lloyd Wenger (Exxon), Ken Whaley (Pennzoil).



**Norman C. Rosen**  
Editor, GCS-SEPM

Thomas Wolfe said you can't go home again; yet that is just what I do every time I attend a GCAGS/GCSSEPM Convention. To me, the chance to see again old friends and hear papers about the area that is the spiritual heart of the industry can not be adequately described in words. As a result, the chance for me to be an editor for the *Transactions* was not regarded as an indignity but as an opportunity to do something for my extended family.

Although some of the authors might not believe this, I have enjoyed serving as your editor. To those who sent me notes of appreciation, I thank you in public for your understanding of the rationale of my suggestions. To those I threatened about late submittals, I hope you understand that this was of necessity. And to those who plan on submitting papers for the first time: meet deadlines!

The GCAGS/GCSSEPM is one of the few conventions that makes a conscientious effort to publish presentations as a courtesy to those attending and for the benefit of the presenter. We recognize that the ability to publish encourages submittals for presentations; and as we are not a refereed publication in the strict sense of the word (and I hope we never become one), we can get new ideas presented that are not thoroughly tested or perhaps disagree with accepted thought. This is what makes the GCAGS/GCSSEPM unique. But you as an author/presenter have an obligation also: meet deadlines!

I would like to thank Roger Sassen, David Callaway, and Bill Hill for participating in the editorial process; it could not have been done without your help. In addition, special thanks and deep appreciation to Mart Smith and BP Exploration for their understanding and support during the busy months earlier this year. Lastly, we all owe a vote of thanks to Hart Graphics, none of this would have been possible without you.

# REPORT OF THE PROGRAM CHAIRMEN

## Forty-First Annual Meeting—1991

*Millis H. Oakes and Dean N. Malouta*

We thank all those authors who responded to our call for papers for the convention. We received 115 abstracts and it was a tough choice to select from such an excellent set.

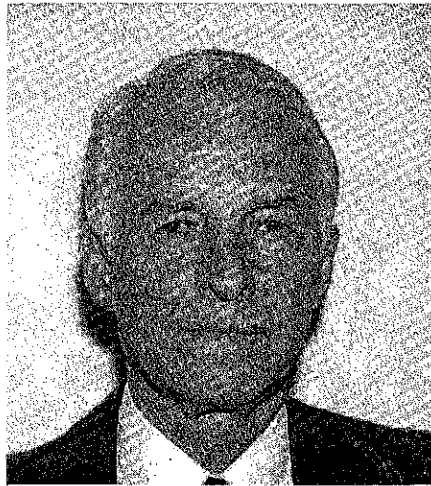
This year's program is aimed at the geoscientist with topics such as "Salt Dynamics and Sequence Stratigraphy" and "Diagenesis and Isotope Studies" as well as "Regional Geology Mesozoic-Tertiary" and "Sedimentation and Sea Level Changes." We have also included topics like "Hydrocarbon Charge and Reserve Calculations" and "Biostratigraphy." This year we have added an "International Session" that covers parts of Africa, Western Europe, the Caribbean, and Canada. We hope that this will recognize the contributions of our fellow Gulf Coast geoscientists to the international community and provide analogs for the geology of the Gulf Coast.

### Program GCS/SEPM

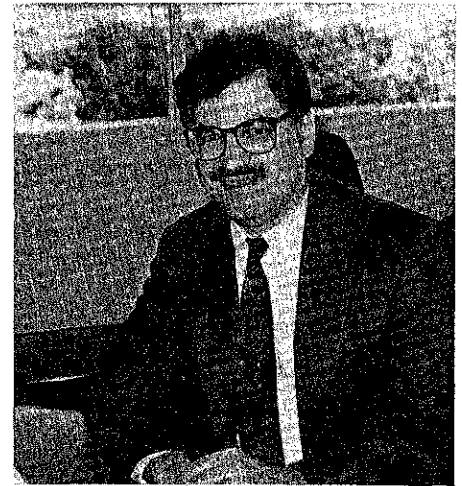
Millis H. Oakes—Chair  
Lillian Roberts  
Don Riley  
John Jordan  
Dr. William Dupre

### Program GCAGS

Dean N. Malouta—Chair  
Sam H. Limerick  
Nick F. Kuich  
Cathy Buchanan  
Deet Schumacher



Millis H. Oakes



Dean N. Malouta

## 1991 GCAGS FINANCIAL AID TO STUDENTS

In 1991 GCAGS received twenty-three requests for financial assistance from both graduate and (honors program) undergraduate geology students in twelve Gulf Coast colleges and universities. Grants totalling \$27,408 were awarded to twenty-one successful applicants. Eleven of these awards were for the maximum of \$1,500.00 and the remaining ten ranged from \$466.00 to \$1,491.00.

A committee chaired by Valerie M. Ewing, New Orleans, consisting of DeWitt C. Van Sicken, Houston, and Willard P. Leutze, Lafayette, reviewed the proposals and recommended grants to the following students:

Terry W. Bryant  
Thomas J. Callahan  
David Paul Cheney  
Janet E. Coker  
Maureen K. Corcoran  
Jeff P. Crabaugh  
Gregg A. Crandall  
David A. DeBalko  
Miles Denham  
C. Elmer Ferro

Auburn University  
University of Southwestern Louisiana  
University of Southwestern Louisiana  
Auburn University  
University of Southern Mississippi  
University of Texas—Austin  
Rice University  
University of Texas—Austin  
Texas A&M University  
Stephen F. Austin State University

Donald W. Harrison  
Michael A. Klidzejs  
Kenneth E. Landrum  
F. Leo Lynch  
Barbara J. Mahler  
Leanne J. Mallini  
Darrell L. Mauldin  
Lawrence D. Meckel, III  
Robert M. Reed  
Mary E. Taylor  
Barry E. Wawak

University of Alabama—Tuscaloosa  
Auburn University  
Tulane University  
University of Texas—Austin  
University of Texas—Austin  
University of Southern Mississippi  
Baylor University  
University of Texas—Austin  
University of Texas—Austin  
Northeast Louisiana University  
University of New Orleans

# CITATION FOR DISTINGUISHED SERVICE AWARD GULF COAST ASSOCIATION OF GEOLOGICAL SOCIETIES

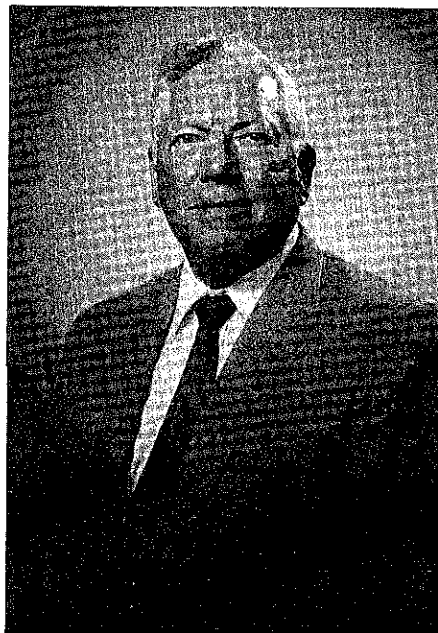
*Claude C. Baker*

**CLAUDE BAKER** was born and raised in New Orleans, where he was educated in the public school system. His undergraduate work at Louisiana State University was interrupted by the Korean War, during which he served in the United States Air Force after activation of his Louisiana Air National Guard unit. Upon his return to civilian life, Claude married Betty Marquette and returned to LSU, where he earned his B.S. in Geology in 1956 and his M.S. in 1959.

While still in graduate School, Claude launched his professional career as a geologist with the Louisiana State Mineral Board in Baton Rouge. He was named Assistant to the Secretary in 1959 and served in that capacity until 1962. Then he moved back to New Orleans to join Tidewater Oil Company (later Getty) as Exploitation Geologist. He was responsible for a very profitable redevelopment program of Venice Field in Plaquemines Parish. With Earle Tingley he co-authored a paper on Venice Field, which appears in *Oil and Gas Fields of Southeast Louisiana*, Volume 1, New Orleans Geological Society, 1967. During his 15 years with Getty, Claude became District Development Geologist and finally District Exploration Geologist.

In 1977 Claude left Getty to become District Exploration Manager of General Crude Oil Co. in Metairie. When in 1979 Mobil purchased General Crude, he remained as District Exploration Manager of Mobil Exploration Company. In 1983 Claude moved to Associate Geological Advisor in the New Orleans office of Mobil E.&P. U.S., the post he now occupies.

The Bakers completed a model family while still in Baton Rouge: Dennis, Jill, Jay, and Pamela. All have earned university degrees; three are married and have



produced five grandchildren for Claude and Betty.

One of the first things Claude did upon arriving in New Orleans was to join its Geological Society. He approached the staff at NOGS, offering to give something back to his profession. NOGS immediately named Claude its Entertainment Chairman, a job he performed with as much zest as he had displayed in the enjoyment of those activities. Since then he has chaired NOGS' Ballot and Technical Projects Committees and served on its Membership/Directory, Geological Registration, Historical, Library, and Nominating Committees.

In 1984 Claude was elected Treasurer of NOGS. He became President-Elect in 1989 and served as NOGS' 51st President 1989-90. At this writing, he is serving as Chairman of the NOGS Memorial Scholarship Fund.

Claude has been an Active Member of the American Association of Petroleum Geologists since 1970, and is Certified Petroleum Geologist No. 2790 of its Division of Professional Affairs. He was a NOGS representative to the AAPG House of Delegates 1986-89. He has accepted the enormous responsibility of serving as General Vice Chairman of AAPG Convention 1993 in New Orleans.

Claude's dedication to his profession transcends all levels of petroleum geological organizations: local, national, and regional. He was General Chairman of GCAGS Convention 1988 in New Orleans, and in his capacity as NOGS President served on the GCAGS Executive Committee 1989-90.

The Mississippi Geological Society (Jackson) also is enriched with the name "Baker" on its membership rolls, an affiliation that grew out of Claude's fine exploration work in the Smackover Trend for Getty. Claude also is a member of the LSU Geology Alumni Advisory Council, is an avid Tiger, and as a recruiter for many years is responsible for the placement (or at least advice to) the finest of LSU's Geology graduates, as well as those from other schools.

This citator was privileged to grow up with Claude in the same neighborhood, where he is remembered as a fierce sandlot baseball competitor. On weekends he now is to be found on the links with his sons, sons-in-law, and friends, giving them no quarter. He strives for excellence in the same way with his family, his fellow employees, and his professional colleagues. Therefore it is no surprise to us that Claude C. Baker has been elected to receive the GCAGS Distinguished Service Award.

—Robert W. Sabaté

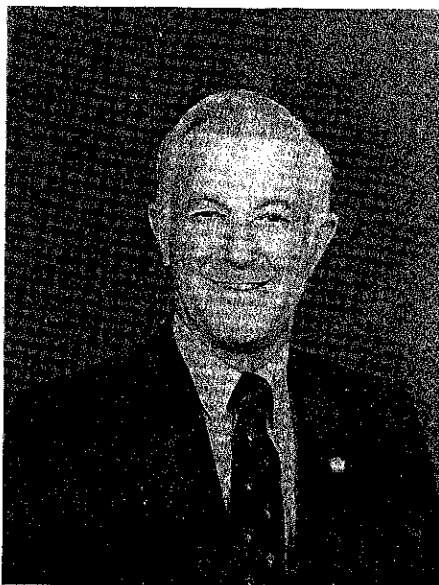
# CITATION FOR DISTINGUISHED SERVICE AWARD GULF COAST ASSOCIATION OF GEOLOGICAL SOCIETIES

*Gerald (Jerry) A. Cooley*

**GERALD (JERRY) A. COOLEY** was born in Jackson, Michigan. He entered the University of Michigan where he received his BS (Geology) in 1946 and his MS (Geology) in 1947. Jerry married Jeanne Arnold, Alvin, Texas, in 1949 and they have a son and three daughters.

He began his career as a geophysicist with Phillips Petroleum Company, Bartlesville, Oklahoma in 1947 and remained for 38 years of outstanding service before electing early retirement in 1985. Early in his career he transferred to the Gulf Coast where his various assignments took him from South Florida to South Texas, onshore as well as in the offshore. He was recognized as a prodigious producer of quality work and as an outstanding supervisor and leader. Upon retirement from Phillips, he became co-founder of PetCons & Associates where he is President and CEO.

In 1953, he joined the Houston Geological Society where he has served



on several Standing Committees as well as in all executive positions from Treasurer to President. For his outstanding dedication to service and leadership, he was made an Honorary Life Member of the HGS in 1987.

Since joining the AAPG in 1947, he has served on several committees as well as four terms as a delegate. He

has been a DPA member since 1982. His other professional affiliations include active membership and committee service in the SEG, the Geophysical Society of Houston, OTC, GCAGS and SIPES.

He has been active in community affairs in Bellaire, Texas where he has resided for 35 years. He is a longtime volunteer in the Boy Scouts of America where he has served on the Adult Training Team and as Scoutmaster and Explorer Advisor for 25 years. For outstanding leadership and service to our youth he was awarded the Silver Beaver in 1981.

“When you want a difficult job done and done well, give it to a busy person” typifies the character of Jerry Cooley. For his outstanding service and dedication to his profession and community, he is truly deserving of the distinguished Service Award.

—*Marvin L. Smith*

# CITATION FOR DISTINGUISHED SERVICE AWARD GULF COAST ASSOCIATION OF GEOLOGICAL SOCIETIES

*Stewart Chuber*

**STEWART CHUBER** has had a varied geographical history. Born on Long Island, New York, he graduated with a Geological Engineering degree from the Colorado School of Mines (1952), and received his Masters Degree (1953) and Doctor of Philosophy Degree (1961) from Stanford University. Stew worked for Mobil Oil of Canada in Libya between his Masters and Doctorate degrees. He arrived in Midland, Texas in 1961 as a Franco-Western geologist after short stints in Sacramento and Bakersfield, California. Stew was very active in the West Texas Geological Society and served as president of the Permian Basin Section of SEPM until his move to Houston in 1968 to be with Buttes Gas and Oil.



Stew worked for Five Resources as exploration vice president before becoming a consultant in 1974. Since then he has generated and participated in numerous exploratory plays, primarily in the Wilcox, about which he has published a number of stratigraphic field papers. Many of these plays have been successful discoveries. Much of his work has been done from his attractive home, office, and country retreat near Schulenburg, Texas, where he moved in 1978. He is still very active there and is a member of both the Houston and South Texas Geological Societies. Since 1987, he has been chairman of the Continuing Education Committee of the STGS and was a contributor to their recent successful Austin Chalk Explora-

tion Symposium, serving as Abstract Editor.

While living in Houston, Stew served as 2nd Vice President (1974–75) and First Vice President (1975–76) of the HGS. In 1978–80, he was Continuing Education Committee chairman and provided several interesting educational seminars. He received the Best Paper Award for a program he presented on Wilcox and Yegua Stratigraphic Traps in the 1970–1 period. In 1985, he deservedly received the HGS Distinguished Service Award.

Some of the most valuable contributions made by Stew have been to the GCAGS.

In 1973, he was Editor of the Transactions Volume 23. He has presented three papers to Annual Meetings in 1979, 1982 (with Bob Begeman), and 1985. Between 1987–90, he chaired the Awards and Nominations committee, where he served with distinction, reporting to the executive committee twice each year.

This is a partial list of contributions Dr. Chuber has made to various geological and oil organizations through his most busy career. He has worked for and published for most of the organizations he has belonged to. He has also served the Society of Independent Professional Earth Scientists (SIPES) in both the Houston and San Antonio Chapters and has been a national director, treasurer, and vice president.

Much of Stew's success and achievement is due to his lovely bride, Anne, since their marriage in 1953. Their family consists of a son and a daughter. In recognizing Stewart Chuber for the Distinguished Service Award, the GCAGS is limelighting the tremendous geological contributions he has made, and his service to various organizations, much of it since he has been self-employed. With his tremendous energy, talent, and friendly personality, he is certainly most deserving of the distinguished Service Award from GCAGS.

—Clyde Harrison

## GULF COAST SECTION-SEPM DISTINGUISHED SERVICE AWARD

*Bob F. Perkins*

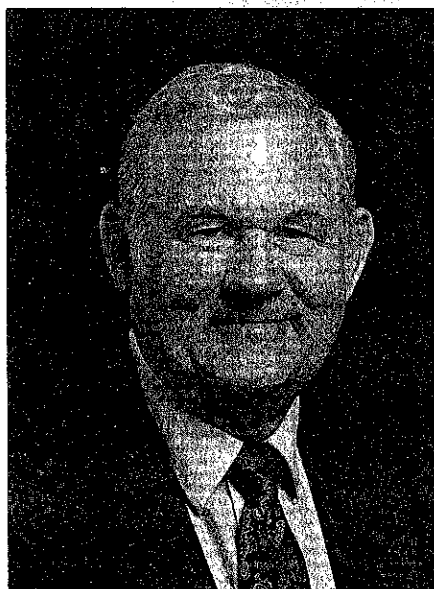
**BOB F. PERKINS**, Professor of Geology and Dean of the Graduate School at the University of Texas at Arlington, has a long and distinguished academic career in geology. However, in spite of the demands of the important posts that Bob has held, he has always found time to make outstanding contributions to the Gulf Coast Section-SEPM and its Foundation.

Bob grew up in Dallas, Texas, where he attended Southern Methodist University. He received his B.S. degree in geology in 1949 and his M.S. degree in geology in 1950. Following that, he spent two years at the University of Michigan. Bob taught geology at both Southern Methodist University and the University of Houston, and completed his Ph.D. degree in 1956. He joined Shell Oil Company in 1957 and worked in Frank Lozo's research group.

After his employment with Shell, Bob returned to academia, accepting a position as Professor of Geology at Louisiana State University. There he displayed the leadership skills that are his hallmark. Through his endeavors, geological research was expanded and numerous important programs and publications were undertaken. These efforts were rewarded when Bob was later elevated to Chairman of the Department of Geology.

In 1975 Bob returned to the Dallas area and accepted the position of Professor of Geology and Dean of the Graduate School at the University of Texas at Arlington. The leadership skills and commitment to excellence that were so successful at LSU soon became evident at UT-Arlington, with improved and expanded academic programs.

Bob has also excelled in paleontologic research. His work in this area has centered



on Mesozoic faunas, and his dissertation on the Albian faunas and stratigraphy of the type Comanchean of Texas and Mexico was published as "G.S.A. Memoir 83." Through his research efforts, Bob is recognized for his expertise in rudists and ichnofossils.

Bob has had a long association with the GCS-SEPM, beginning with charter membership. As in his academic pursuits, Bob has been a leader in Section activities. He served as Vice-President (1978-79), President-Elect (1979-80), President (1980-81), Field Trip Committee Chairman (1979-80), Research Conference Chairman (1980-83), Foundation Director (1983-present), and Honorary Member (1984).

Through Bob's devotion to excellence and his untiring efforts to improve and expand Section activities, the organization has grown in stature and is now recog-

nized for its leadership position in Gulf Coast geological pursuits. Bob has performed especially valuable service with the GCS-SEPM Foundation. Through his tireless efforts the Foundation was organized, and he single-handedly guided it from a concept to a fully tax-exempt, public foundation. Under his leadership as Director, the Foundation has been active in the publication of various studies of Gulf Coast geology, and has provided support for students of geology in Gulf Coast universities.

Perhaps the Foundation's greatest achievement has been its series of annual research conferences, which were initiated in 1980. As Foundation Director, Bob has worked to insure the quality of success of each conference. The widespread recognition of this series as the pacesetter in Gulf Coast geologic research seminars is convincing evidence of Bob's skillful management of Foundation endeavors.

In almost every organization there is one member who stands out for his dedication to the goals of the group, for his willingness to do more than is ever expected, and for his sincere concern that the organization should serve its membership and associated community in the best way possible. Bob F. Perkins is that individual for the Gulf Coast Section-SEPM. In recognition of all his unselfish service, innumerable contributions, and continuing concern for the Section, it is most appropriate to award Bob Perkins the Gulf Coast Section-SEPM Distinguished Service Award.

—W.P.S. Ventress

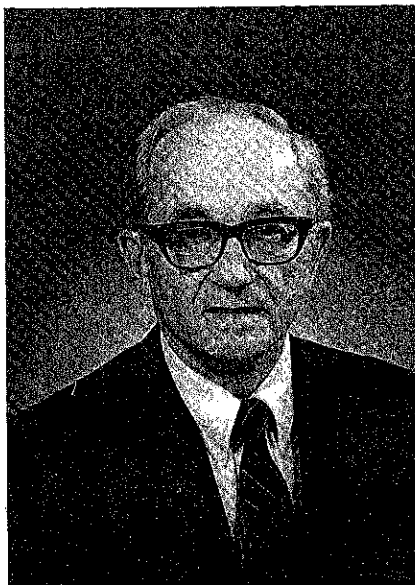
# CITATION FOR OUTSTANDING EDUCATOR AWARD

*Bob Berg*

The GCAGS is now recognizing something that his students and colleagues have known for a long time: that **BOB BERG** is one hell of a good teacher!

Since 1967, when he was hired as Professor and Head of Geology at Texas A&M University, Bob Berg has served as the archetype and role model of a Research-as-Teacher. At the same time that he was publishing 50 papers and 30-odd abstracts about the science of petroleum geology, he was also teaching the principles and practice of that science to his students and professional geologists.

Just look at the record. Bob Berg graduated 87 Masters students and 15 doctoral students in his 25 years at Texas A&M. Eighty percent of his students are now employed in the oil-and-gas industry, where they are often affectionately referred to as "Boss." About 500 professional geologists from Tenneco, Chevron, Phillips, ARCO, Conoco, Mobil and other companies have attended the weeklong short courses in sandstone depositional environments and petroleum geology that he has been offering at Texas A&M since 1974, and



another 5000 or so have attended short courses offered by this Distinguished Lecturer of the American Association of Petroleum Geologists.

On the A&M campus, Bob Berg has been honored with the prestigious Former Students' Award for Excellence in Teaching, and he rightly occupies the Michael T. Halbouty Chair in Petroleum Geology. Off campus, he has been honored with fellowships and honorary memberships from the Geological Society of America, the American Association of Petroleum Geologists, and Gulf Coast Associ-

ation of Geological Societies. He has also been the recipient of the A.I. Levorsen Memorial Award (four times) and the American Institute of Professional Geologists' Ben Parker Medal, and he was recently elected to the National Academy of Engineering. This man has more plaques than a dentist!

But by far, the greatest honors and accolades come from his students and colleagues, who know him best. All of us have been touched by this patient and wise teacher. In the classroom, he has consistently presented a clear, precise, and modern picture of the state of his science, and outside the classroom, he has shared with us his sense of the earth, his unbounded love for geology, and his joyful enthusiasm for scientific inquiry and investigation. All of us, faculty and students, look up to this man, respect him, and try to emulate him.

As far as Aggie geologists are concerned, you could not find a better candidate for the Outstanding Educator Award than our colleague and teacher, Bob Berg.

—*Jim Mazzullo*

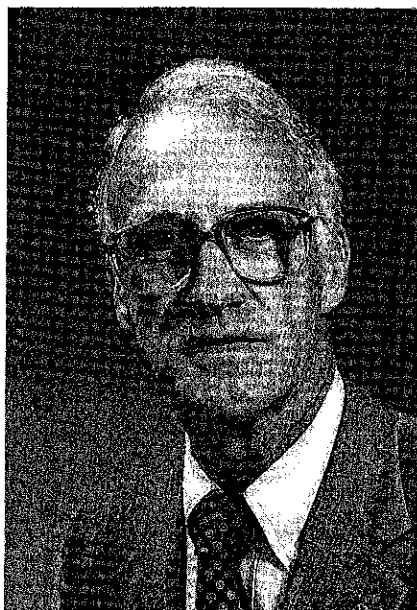
# CITATION FOR OUTSTANDING EDUCATOR AWARD

*James M. Coleman*

**JAMES M. COLEMAN's** appointment as executive vice-chancellor of Louisiana State University in 1989 climaxed a career that began at Coastal Studies Institute while he was working toward his B.S. in geology. After earning that degree in 1958 and his Ph.D. in 1966, Jim remained with CSI, becoming assistant director of the Institute in 1971 and director in 1975. Reestablishment of the School of Geoscience in 1985 led him to assume the leadership in uniting several geological units into a cohesive education/research organization. In 1989, while serving as acting dean of the College of Basic Sciences in addition to his duties as head of the School of Geoscience, he was chosen to chair the committee that conducted a successful search for a new chancellor of LSU. Recognizing Jim's talent and ability as an administrator, Chancellor William E. Davis named him to this present position.

As he has pursued an academic career as teacher, researcher, and administrator. Jim has also established an international reputation as one of the world's foremost authorities on deltas and on mass movement processes and slope instability in nearshore waters, having studied delta complexes and related sediments around the world. In 1983 he was chosen co-chief scientist on Leg 96 of the Deep Sea Drilling Project, one of the largest international cooperative oceanographic programs ever undertaken. He has also served as Gulf Coast representative on the Exclusive Economic Zone for the U.S. Geological Survey.

He has received the Shepard Award for Excellence in Marine Geology from SEPM (1980); the A.I. Levor-



son Award, presented at the Gulf Coast Association of Geological Societies (1973); the Boyd Professorship, the highest honor LSU gives its faculty (1980); the LSU Distinguished Research Master Award (1976); and the LSU Foundation Distinguished Faculty Fellow Award (1976). Recently elected to membership in the National Academy of Engineering (1990), he is one of only four Louisianians to be so honored.

The author of approximately 170 papers published in scientific journals and two books, Jim serves as consulting editor of the Transactions of the Royal Society of Edinburgh and as associate editor of *Geo-Marine Letters*. He has appeared in and helped develop two educational films: *Deltaic Sand Bodies*, for the American Association of Petroleum Geologists, and *Deep-Sea Sands* (with Arnold Bouma), for the British Broadcasting

Company in association with AAPG. He also has lectured frequently and has led numerous field trips during the past 20 years. He was chosen as an American AAPG Distinguished Lecturer in 1976 and 1977 and as a Shell Oil Company Distinguished Lecturer in 1979. He has been invited to present continuing education courses for the AAPG, the Society of Exploration Geophysicists, numerous local geological societies, the Ministry of Petroleum of the Republic of China; and he has been invited to prepare field trips for the International Geological Congress and national societies. Invitations to be keynote speaker have been issued by SEPM (1988), the Royal Geological and Mining Society of the Netherlands (1987), and the Gruppo Nazionale Geografia Fisica e Geomorfologia—Gruppo Nazionale di Sedimentologia of Italy (1993).

A fellow of the Geological Society of America, Jim is a member of AAPG, the Gulf Coast Section of SEPM, the Baton Rouge Geological Society, and Sigma Xi. He has been named to *Who's Who in America*, *Who's Who in Frontiers of Science and Technology*, and *American Men and Women of Science*.

Despite his very busy schedule as a university administrator and policy maker, Jim continues to give lectures, lead field trips, direct student research, and serve in other capacities.

James M. Coleman is truly an outstanding educator in the broadest sense of the term, encompassing many facets of the endeavor, and thus is most worthy of this initial award by GCAGS.

—David E. Pope



# CITATION FOR OUTSTANDING EDUCATOR AWARD

*Brian E. Lock*

**BRIAN LOCK** entered Cambridge University in October, 1963. He completed a B.A. with honors in 1966 and immediately entered the Ph.D. program in geology. His Ph.D. was awarded in June, 1969. At this early point in his career, Brian demonstrated a classic characteristic of the successful college professor. Realizing that he had forgotten something along the way, he completed an M.A. degree in January, 1970, six months after he was awarded his Ph.D. degree. Brian's Ph.D. research was directed by Dr. John Dewey, who is best known for his work on various aspects of plate tectonics. Brian studied and mapped a highly deformed Paleozoic section in a part of western Newfoundland. The first two papers from his doctoral research were published in AAPG Memoir #12, and a third appeared in the Transactions of the 24th International Geological Congress.

Brian took up his appointment as Lecturer in Geology at Rhodes University, in South Africa, in January 1970. While at Rhodes he published a number of articles on southern African stratigraphy and sedimentology, many of which are referenced in regional textbooks. In August, 1977, Brian accepted an appointment in the Department of Geology at the University of Southwestern Louisiana (USL). To the present he has published over 70 papers, 70% of which have been in refereed journals, not including many more papers delivered at local, national, and international meetings. And, of course, he delivered thousands more papers while employed by the *London Times* as a lad of 12 years age.

While at USL Brian has become a very productive faculty member, respected by students as an excellent teacher and by his colleagues as a tireless and effective teacher and researcher. His qualifications



were recognized soon by the USL administration because in 1980, after only three years on the faculty, he was promoted to Full Professor. In 1988 his credentials, including his teaching and research record, were reviewed and he was recognized as a USL Distinguished Professor. He was one of only three professors at the university who were selected that year. While at USL he has averaged three papers per year and has involved his thesis advisees in much of the research.

Both Brian's teaching and research interests have ranged widely because of his insatiable scientific curiosity and his general competence. His research interests while he was at Rhodes University, though broad ranging, concentrated on the study of pyroclastic volcanic rocks. Since he came to USL, his field of interest has shifted toward sedimentary rocks, especially carbonates, and later evaporites,

with a major ongoing research project in Mexico. He is also actively involved in several projects involving studies of sedimentation and diagenesis of subsurface sandstones in Louisiana.

Brian Lock has been very committed to and involved with professional societies throughout his career. Service to societies includes membership on the board of Directors (1982-84) of the Lafayette Geological Society, Continuing Education Chairman, Field Trip Chairman, and Editor of the Bulletin. He has served as Chairman of the Evaporites Research Group of the SEPM (1989-90). Brian recently completed his tenure as the General Chairman of the 40th annual GCAGS Convention that was held in Lafayette during October 17-19, 1990. This commitment was a very demanding one, both in terms of time and energy, over a period of two years. Within the University, Brian has served on or chaired a number of important committees; he is currently Chairman of the Graduate Council, among other administrative responsibilities.

Brian Lock is a professional in the most comprehensive sense. He is recognized by students and peers alike as an excellent teacher and research scientist. His reputation in evaporite research especially has reached international scope. His commitment to professional organizations and their activities is exemplified by the prodigious effort he put forth to ensure that the 1990 version of the GCAGS annual meeting was a success. The Distinguished Service Award is presented to Dr. Brian Lock for his record in professional advancement and service, and especially his dedication to the advancement of the purposes and goals of the GCAGS.

—Daniel L. Tucker

## CITATION FOR OUTSTANDING EDUCATOR AWARD

*Edward C. Roy, Jr.*

**EDWARD C. ROY, JR.**, professor and vice-president for academic affairs at Trinity University, received his education from Ohio State University, earning his B.S. degree with High Distinction in Geology in 1961, and his Ph.D. in Geology in 1964. Upon completion of his doctoral studies, Ed joined Shell Oil Company as a micropaleontologist, first in Corpus Christi and then in Houston. He joined the faculty of Trinity University in 1966, and rose through the ranks to full professor in 1977. Ed became chairman of the geology department in 1978, and was appointed Dean of Science, Mathematics and Engineering in 1986. One year later he became Trinity's chief academic officer.

Over the past two decades Ed has been active in serving the geological profession by accepting numerous responsibilities in local, regional and national societies. He has served as vice president and president of the South Texas Geological Society, chairman of several SEPM committees, and Secretary of the American Geological Institute Executive Committee. His extensive service to AAPG was appropriately recognized in 1990 with presentation of their Distinguished Service Award.



Ed has been especially active in GCAGS, serving as president in 1978/79, chairman of the Financial Aid to Students Committee, member of the Finance Committee, chairman of the Long Range Planning Committee, member of Publications Committee and Technical Program Co-Chairman for 1987 Annual Meeting. Of particular note is his initiation in 1980 of the GCAGS Reprint Series, which has become an important source of information for Gulf Coast geologists.

In 1983, Ed was awarded Honorary Membership in GCAGS.

Although Ed's administrative activities consume the bulk of his time, he still insists on classroom contact with his students, thereby both renewing himself and sharing his extensive knowledge with those who will be the geologists of the future. Ed also has continued his strong interest in quality research. His coauthored paper "A Late Cretaceous calcarenite beach complex associated with submarine volcanism, Wilson County, Texas" won both the GCAGS Best Paper Award and the GCAGS A. I. Levorsen Award in 1981. Ed's research focuses on Mesozoic biostratigraphy and sedimentology. He has 18 research articles in print and recently has been examining the Escondido Formation of south Texas.

Through his professional career, Ed has unselfishly given of his time and ability to provide both an excellent education for his students and inspiration to his colleagues. It is indeed fitting that Edward C. Roy, Jr., is receiving The Outstanding Educator Award.

—Robert L. Freed

## GULF COAST SECTION-SEPM HONORARY MEMBERSHIP

*Ernest Anthony Mancini*

**ERNEST ANTHONY MANCINI**, better known as Ernie by his many friends, was born in Reading, Pennsylvania, on February 27, 1947. He attended both grade school and high school in Reading and fondly acknowledges high school track coach as an early guiding force encouraging his continuing education. Ernie received his B.S. in Biology from Albright College in 1969, his M.S. in Zoology from Southern Illinois University in 1972, and his Ph.D. in Geology from Texas A&M University in 1974 under the supervision of Robert Stanton, a friend and mentor whose insistence on an integrated approach to geology has left its mark on Ernie's scientific research.



Ernie began his professional career in 1974 as a petroleum exploration geologist with Cities Service Company in Denver, Colorado. In 1976, he accepted dual positions as a petroleum geologist with the Mineral Resources Institute and an Assistant Professorship with the Department of Geology at the University of Alabama in Tuscaloosa. His motivation and dedication to his students and the exceptional quality of his published research rapidly led to his appointment as Associate Professor (1979) and Professor (1984) of Geology, a position he continues to maintain.

Although recognized as a gifted and inspiring teacher and having attained significant professional standing in the geological sciences, his ability as an outstanding and influential administrator were soon to become even more apparent. On February 8, 1982, Ernie was ap-

pointed to the challenging position of State Geologist and Supervisor of the Oil and Gas Board of Alabama. Ernie is only the sixth State Geologist to serve since the position was established by the Alabama Legislature in 1848. Because of his scholarship, personality, steadfast integrity, and dedication to the citizens of Alabama, Ernie has established the Geological Survey and Oil and Gas Board as one of the most productive, efficient, and respected governmental agencies within Alabama. Under his guidance, Alabama leads the nation in research on coal-bed methane and is the leader in exploration and production of this vital resource while at the same time establishing the regulatory guidelines for the simultaneous protection and preservation of Alabama's treasured environment. As State Geologist, his responsibilities are broad with a seeming endless demand on his time. Although his achievements as principal administrator of the Geological Survey are many,

perhaps most noteworthy is his success in integrating the traditional heritage of service to the State while encouraging a highly motivated staff of researchers to maintain expertise in pure research. In testament to his success, the professional and technical staff currently consists of more advance degreed personnel than at any time in the history of the agency, currently publishing about thirty-five technical publications each year.

Ernie has enthusiastically served his profession in a truly exceptional manner, including the publication of more than seventy professional papers and ninety abstracts; served as an organizer of many conferences and symposia; is a devoted member of numerous professional organizations; has conducted many field trips; and has been an invited lecturer to more than thirty-five professional and technical meetings.

Ernie has served the Gulf Coast Section-SEPM as its Vice President (1982-1983) and President (1984-1985) and served as a co-chairman or committee member for four of its research conferences. Because of his exceptional enthusiasm for geology and his uncommonly broad geological expertise, the quality of his professional publications, service to the geological community, inspiration as an outstanding teacher, integrity and demonstrated leadership as an administrator, but especially for his distinguished service and dedication to the Gulf Coast Section-SEPM, it is fitting that Ernie is recognized as an Honorary Member.

—Charles C. Smith

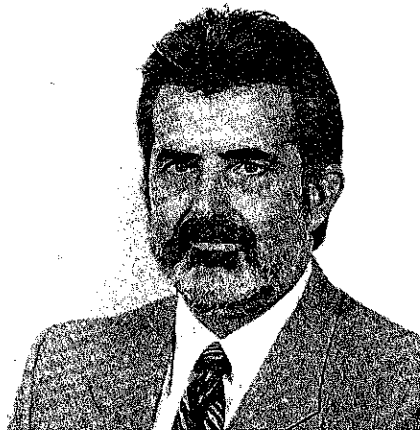
# 1990 BEST PAPER AWARDS AND A. I. LEVORSEN MEMORIAL AWARD

**First Place and  
A.I. Levorsen Award  
awarded to:**

***Michael P. Prescott***

*For: The Maurice Field:  
New gas reserves from  
buried structure along the  
Oligocene trend of  
southwestern Louisiana*

MICHAEL P. PRESCOTT has been an independent geophysicist/geologist since 1984. During this time he founded Big M Exploration, Inc., which specializes in prospect and play generation in south Louisiana.



Prior experience includes positions of Consulting Geophysicist, R. Brewer & Co., and Exploration Geophysicist for Getty Oil Co., and Gulf Oil Corp.

Mike received his B.S. in Geophysics and an M.B.A. in Management Engineering from the University of Tulsa. He received the 1988 Best Paper Award from the GCAGS for the article "South Lake Arthur Field and Occurrence of Buried Structures Along the Oligocene Trend of Southwestern Louisiana." He is a member of the AAPG, SEG, HGS and GSH.

Current projects include studies of buried trap geometries and low resistivity pays in south Louisiana.

**Second Place awarded to:  
*Philip L. Cook, Jr., John D.  
Bush, John C. Marble, and  
Robert D. Schneeflock***

*For: Trimble Field, Smith  
county, MS: 100 BCF of  
by-passed pay at -7000'*

PHILIP L. COOK, JR., geologist and owner of Cook Energy, Inc., Jackson, MS, has sixteen years of exploration and production experience in the southeastern U.S. He has held positions with Amoco, Forest Oil Corporation, Spooner Petroleum Company, Endeveco Producing Company and as an independent petroleum geologist. Mr. Cook earned B.S.

and M.S. degrees in Geology from the University of Southern Mississippi.

JOHN D. BUSH, geologist and partner in Paramount Petroleum Co., Inc., has thirteen years of experience in the oil and gas industry. He has held positions with Dresser Atlas, Hunt Energy Corporation, Hunt Petroleum Corporation, Hunt Entities, and Bruxoil Inc. Mr. Bush earned a B.S. degree in Geology and did graduate work toward a M.S. degree in Geology at the University of Southern Mississippi.

JOHN C. MARBLE, geologist, and previously Exploration Manager of Paramount, has been with the company since 1986. He has fifteen years of experience, including positions with the Mississippi Geological Survey, Cities Service Company, Forest Oil Corpora-

tion, and Amax Petroleum Corp. Mr. Marble graduated from Mississippi State University with a B.S. degree in Geology and completed all course work towards a M.S. in Geology from the University of Southern Mississippi.

ROBERT D. SCHNEEFLOCK, Chief Operating Officer and Co-founder of Paramount Petroleum Co., Inc. directs exploration and production activities and manages the Jackson, Mississippi office of Paramount. He has an aggregate of twenty-one years of experience as a geologist and exploration manager for several independent oil companies, including Hunt Energy and Clayton Williams. Mr. Schneeflock graduated from the University of Southern Mississippi with a B.S. in Geology; the University of Alabama with a M.S. in Geology, and from California State University with a B.A. in Economics.



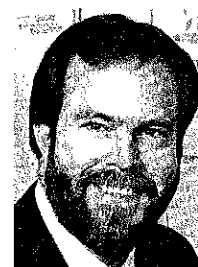
Philip L. Cook, Jr.



John D. Bush



John C. Marble



Robert D. Schneeflock

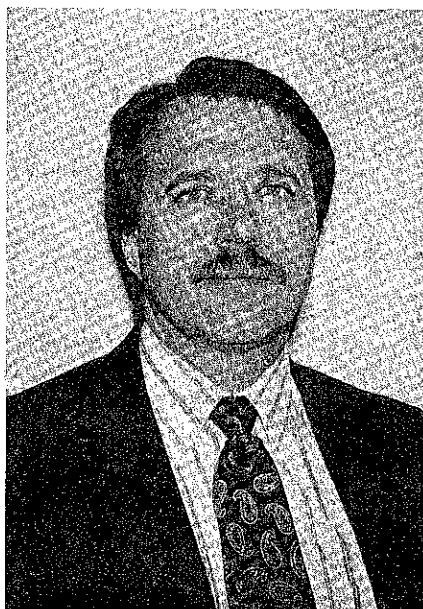
**Third Place awarded to:  
*Daniel J. Tearpock and  
Harvey Pousson*  
For: *A three-dimensional  
correction factor equation  
for deviated wells***

**DANIEL J. TEARPOCK**, is currently the owner of Subsurface Consultants & Associates, a geological, geophysical, and engineering consulting firm in Lafayette, Louisiana. He received his Bachelor Degree in geology from Bloomsburg University and his Masters Degree from Temple University.

He has held part time teaching positions at several small colleges and universities. He was an adjunct Associate Professor at Tulane University in New Orleans in the Petroleum Engineering Department.

Mr. Tearpock served as a Geothermal Energy Development Specialist with Vickers in Jackson, Mississippi. He conducted geothermal studies in California, Nevada, Utah, and geopressured studies in the Gulf of Mexico. As his interests became more focused on oil and gas exploration and development, he became a petroleum consultant in New Orleans, Loui-

siana. As a consultant, he conducted and supervised a broad range of geological, engineering and economic studies both onshore and offshore. In addition he helped organize and co-taught an industry course in subsurface mapping. His primary area of interest is in the evaluation, remapping and redevelop-



**Daniel J. Tearpock**

ment of older oil and gas fields (to find what everyone else has left behind).

As a Project Geological Engineer for Tenneco Oil Company, he conducted detailed field studies in Tenneco's older offshore fields in the Central Gulf Division, which resulted in the generation of a number of new development and exploratory drilling locations. He was also responsible for the organization and development of the company's subsurface mapping training program which included the development of a subsurface mapping manual and the teaching of subsurface mapping courses to Tenneco's worldwide staff of geologists, geophysicists, and petroleum engineers.

Mr. Tearpock has authored or co-authored publications in the areas of geothermal energy, structural geology, and petroleum subsurface mapping. He has just completed writing a graduate level/industry textbook entitled *Applied Subsurface Geological Mapping*. The textbook is published by Prentice-Hall, Inc., and will be marketed worldwide.

In addition to offering a wide range of consulting services, Mr. Tearpock offers industry and in-house training courses in subsurface geological mapping and structural balancing. He is a certified petroleum geologist and a member of the AAPG, SPE, GSA, and LGSF.

# 1990 BEST POSTER AWARDS

## First Place awarded to:

**Thomas H. Fett**

For: *Criterion for recognition of bedding structures utilizing imaging devices*

**THOMAS H. FETT** is a petrophysicist and Application Development Engineer with Schlumberger Well Service. Fett graduated in 1966 with a B.S. in engineering science from Trinity University. Immediately following graduation, he began his long association with Schlumberger Well Service in positions ranging from Field Engineer in Alice, Pharr, and Corpus Christi to Station Manager and District Manager in Graham, Texas. He has specialized in the well log evaluations of tight rocks of South Texas, identifying and exploiting clastic depositional environments, applications and interpretation of dipmeter and Formation MicroScanner logs. Since 1978, he has taught senior and graduate level courses in log evaluation for the Natural Gas Engineering Department of Texas A&I University in Kingsville, Texas.

Fett's work for Schlumberger has included presentations on well logging in many parts of



the world, including Houston, Dallas, Corpus Christi, New Orleans, Denver, as well as Calgary, Paris, Cairo, Tokyo, London, and Singapore. Interspersed with his travels and other varied activities, he has presented short courses and technical papers at meetings of the Society of Professional Well Log Analysts, the Society of Petroleum Engineers, the American Association of Petroleum Geologists, the Gulf Coast Association of Geological Societies, and numerous local geological and engineering society meetings.

Fett is a member of the American Association of Petroleum Geologists (AAPG), American Petroleum Institute (API), Society of Economic Paleontologists and Mineralogists (SEPM), Society of Petroleum Engineers (SPE), Society of Professional Well Log Analysts (SPWLA), as well as the Corpus Christi, Houston, and San Antonio Geological Societies, and Coastal Bend Geophysical Society. He supports and actively participates in the affairs of these various organizations. He has served in many capacities, such as Vice Chairman of the 1981 and 1989 GCAGS/GCS-SEPM Annual Meetings, General Chairman for SPWLA 1982 Symposium, International Director and Secretary for SPWLA. He has also served as President and Vice President of the Corpus Christi Chapter of SPWLA, the Past Director of the Corpus Christi Chapter of SPE of AIME, Past Director of the Corpus Christi Chapter of API, and Business Representative for GCS/SEPM.

In 1989 he was the recipient of the 1989 Distinguished Service Award of the Gulf Coast Section, Society of Economic Paleontologists and Mineralogists. In 1990 he was awarded first place for posters at the Gulf Coast Association of Geological Societies meeting in Lafayette.

## Second Place awarded to:

**R. Brent Bray and Jeffrey S. Hanor**

For: *Spatial variations in subsurface pore fluid properties in a portion of southeast Louisiana: Implications for regional fluid flow and solute transport*

**R. BRENT BRAY**, B.S. Geology (1985), Virginia Polytechnic Institute and State University (cum laude), Blacksburg, VA., M.S., Geology (1989), Louisiana State University, Baton Rouge, LA. Thesis Title: Spatial variations in Subsurface Pore Fluid Properties in a Portion of Southeast Louisiana: Implications

for Regional Fluid Flow and Solute Transport. M.S. degree completed under the guidance of Dr. Jeffrey S. Hanor. Currently Hydrogeologist for ERM-Southwest, Inc., an environmental consulting firm in New Orleans, LA.

**JEFFREY S. HANOR** received his B.A. in Geology, Magna Cum Laude, Honors, from Carleton College and his A.M. and Ph.D. degrees in Geology from Harvard. Hanor was an NSF Postdoctoral Fellow and a Research Oceanographer at the Scripps Institution of

Oceanography. He has been on the faculty of Louisiana State University since 1970 and has served as both Chairman of the Department of Geology and Geophysics and Director of the School of Geoscience. He is the author of the recent book *Origin and Migration of Subsurface Sedimentary Brines*, and numerous journal articles and book chapters on sedimentary geochemistry and fluid migration in sedimentary basins.



R. Brent Bray



Jeffrey S. Hanor

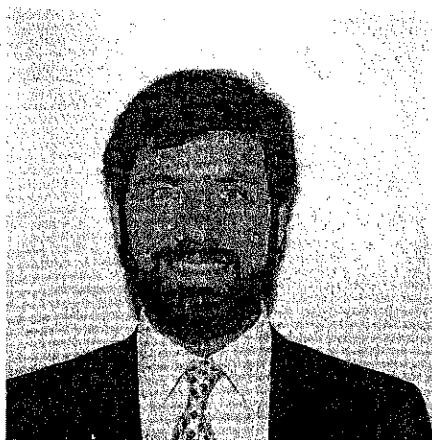
# BEST CORE PRESENTATION AWARD

*Randolph A. McBride, Shea Penland, and John T. Mestayer*

*For: Facies architecture of the Bayou Grand Caillou area:  
An abandoned shallow water delta of the Mississippi River delta plain*

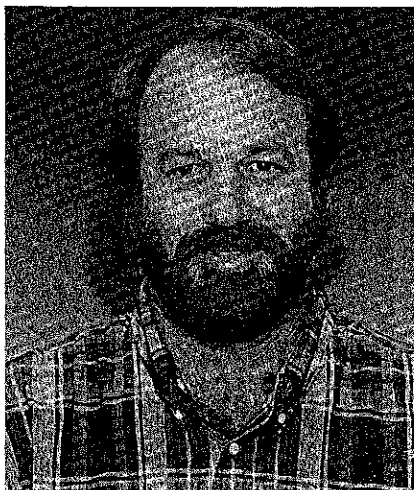
**RANDOLPH A. MCBRIDE** received his B.A. degree from Wittenberg University in Springfield, Ohio, in 1982. In 1982-83, McBride participated in a work/study program in London, England, working as an assistant exploration geologist (North Sea) with Kerr-McGee Oil Co., Ltd., while taking additional geological course work at London Polytechnic. In 1986 he completed his M.S. degree at Louisiana State University with an emphasis on modern coastal and shallow marine depositional systems along the U.S. Atlantic shelf. Since 1986, McBride has been a Research Associate with the Louisiana Geological Survey, Coastal Geology Section.

McBride's professional experience has focused on coastal geomorphology and geology, computer mapping, and geographical information systems. During the past eight years, he has conducted fieldwork in Western Australia, the U.S. Atlantic coast, the Gulf of Mexico, and Alaska. In 1989 and 1990 McBride worked as an oil geomorphologist



Randolph A. McBride

**SHEA PENLAND** is a native of the Jacksonville Beaches of northeast Florida and received his B.A. degree from Jacksonville University and his M.S. and Ph.D. degrees from Louisiana State University. Currently, Dr. Penland is the Acting Associate Director of the Louisiana Geological Survey (LGS). He has more than a decade of coastal research experience in the Gulf of Mexico, Gulf of Alaska, Beaufort Sea, North Sea, and Maritime Canada focusing on framework geology, coastal land loss, and environmental issues. Since 1982, he has worked at the LGS investigating the framework geology and coastal processes of coastal land loss in Louisiana and



Shea Penland

on the Exxon Valdez oil spill in Prince William Sound and on Kodiak Island, Alaska. Current research activities include shoreline change, wetland loss, and geologic framework studies on the Mississippi River delta and chenier plains, in cooperation with the United States Geological Survey (USGS); hard mineral resource exploration along the northern Gulf of Mexico, with funding from the United States Bureau of Mines; and development of the Louisiana Coastal Geographical Information System Network (LCGISN), also in cooperation with USGS.

McBride is author or co-author of over 20 scientific articles, maps, and atlases. He has assisted in leading numerous field trips for various scientific societies and petroleum companies to examine coastal and shelf depositional systems of Louisiana. He is a member of SEPM and the Baton Rouge Geological Society.

the Gulf of Mexico as well as hard mineral assessments for use as construction aggregate for coastal erosion control. Dr. Penland is serving as the co-chairman of the GCSSEPM 1991 Research Conference—Coastal Depositional Systems in the Gulf of Mexico: Quaternary Framework and Environmental Issues—to be held in Houston, Texas on 8-11 December 1991.

## 1990 GULF COAST SECTION-SEPM BEST PUBLISHED PAPER AWARD

*George C. Flowers and Wayne C. Isphording*

*For: Environmental Sedimentology of the Pontchartrain Estuary*

**GEORGE C. FLOWERS** is a professor in the Department of Geology at Tulane University. He attended the University of South Alabama in Mobile from 1971 to 1975 and graduated cum laude with a B.S. degree in Geology. After completion of the B.S. degree, he attended the University of California, Berkeley where he completed the Ph.D. degree in 1979, specializing in theoretical geochemistry. Following completion of the Ph.D. degree, he was a postdoctoral fellow in the Department of Chemistry and Lawrence Berkeley Laboratory at the University of California, Berkeley. From 1981 to the present he has taught at Tulane University, and his interests include both theoretical and applied topics in geochemistry. He was the recipient of the GCS-SEPM "Best Paper Award" in 1987 for a paper on the impact of recent hurricanes on Apalachicola Bay, Florida.



George C. Flowers

**WAYNE C. ISPHORDING** earned his B.S. and M.S. degrees at the University of Florida where he majored in Geology and minored in physics. He received his Ph.D. at Rutgers University, in 1966, and presently holds the rank of Professor of Geology at the University of South Alabama. Isphording has carried out numerous studies dealing with the sedimentology and geochemistry of various Gulf of Mexico bays and estuaries and has published or presented nearly 200 papers on a variety of geological topics. Wayne was twice elected his university's "Outstanding Scholar" and was also named Distinguished Professor in the College of Arts and Sciences. He has had considerable experience in utilizing computer-graphics techniques in environmental litigation and has worked extensively as a consultant in the field of Engineering Geology. He is a member of AAPG, SEPM, AEG, and AIPG and is a fellow in the GSA. Wayne is a past winner, on three other occasions, of GCAGS/GCSSEPM "Best Paper" Awards.



Wayne C. Isphording

## 1990 GULF COAST SECTION-SEPM EXCELLENCE OF PRESENTATION AWARD

*Jory A. Pacht*

*For: Sequence Stratigraphy of Plio-Pleistocene Depositional Facies in the Offshore Louisiana South Additions*

**JORY PACTH** received his B.S. in geology from Ohio University in 1973. He worked as a well-site geologist with Sentry Engineering for a year and a half, then completed his M.S. degree in 1976 at University of Wyoming. Jory received his Ph.D. in geology in 1980 from Ohio State University. During his final year of study he served as Assistant Professor at Kent State University. In 1980 he joined the staff of the Exploration Research Group of ARCO Oil and Gas Company, where he served as a Senior Research Geologist. Dr. Pacht left ARCO and joined RPI International in 1988 as a Senior Scientist. He was immediately sent by that company to the offices of TGS Offshore Geophysical Co. where he worked on sequence stratigraphic projects as a consultant. He joined Calibre Consulting Services, Inc., an affiliate of TGS, in 1990, where he serves as an International Project Coordinator.

Dr. Pacht has written over 70 outside and in-house research papers and has worked as a principal scientist on regional sequence stratigraphic studies covering both the North and South additions of the offshore Louisiana Gulf Coast.





## HONORARY MEMBERS

### GULF COAST ASSOCIATION OF GEOLOGICAL SOCIETIES

*D.R. Boyd (1982)*  
*J. Braunstein (1982)*  
*M.T. Halbouty (1982)*  
*F.W. Harrison, Jr. (1982)*  
*H.N. Hickey (1982)*  
*L.H. Meltzer (1982)*  
*S.J. Lysinger (1983)*  
*J.O. Lewis (1983)*  
*E. C. Roy, Jr. (1983)*  
*F.L. Smith, Jr. (1983)*  
*P.M. Strunk (1983)*  
*R.J. LeBlanc, St. (1984)*

*W.R. Paine (1984)*  
*M.O. Turner (1984)*  
*R.R. Berg (1985)*  
*W.L. Fisher (1986)*  
*C.L. Sartor (1986)*  
*J.J. Amoruso (1987)*  
*W.L. Stapp (1988)*  
*J.A. Gilreath (1989)*  
*R.E. Boyer (1990)*  
*J.A. Hartman (1990)*  
*T.H. Philpott (1990)*

*none awarded (1991)*

## DISTINGUISHED SERVICE AWARDS

### GULF COAST ASSOCIATION OF GEOLOGICAL SOCIETIES

<i>1982</i>	<i>R.E. Boyer</i>	<i>P.B. Souders</i>	<i>B.C. Tucker</i>
<i>1983</i>	<i>none awarded</i>		
<i>1984</i>	<i>A.T. Green, Jr.</i>	<i>DeWitt C. Van Siclen</i>	
<i>1985</i>	<i>C.E. Harrison</i>		
<i>1986</i>	<i>none awarded</i>		
<i>1987</i>	<i>none awarded</i>		
<i>1988</i>	<i>none awarded</i>		
<i>1989</i>	<i>H.G. Collier, Jr.</i>	<i>R.B. Seigert</i>	
<i>1990</i>	<i>C.J. Corona</i>	<i>R.W. Sabaté</i>	
<i>1991</i>	<i>C.C. Baker</i>	<i>G.A. Jerry Cooley</i>	<i>S. Chuber</i>

---

**HONORARY MEMBERS**  
**GULF COAST SECTION**  
**SOCIETY OF ECONOMIC PALEONTOLOGISTS AND**  
**MINERALOGISTS**

---

*Ester Applin (1964)*  
*Alva C. Ellisor (1964)*  
*Marcus A. Hanna (1964)*  
*Henry V. Howe (1964)*  
*Hedwig T. Kniker (1964)*  
*Winnie McGamery (1964)*  
*John R. Sandidge (1964)*  
*J. B. Garrett, Jr. (1965)*  
*E. H. Rainwater (1966)*  
*Henryk Bronislaw Stenzel (1971)*  
*Jules Braunstein (1973)*  
*Grover E. Murray (1973)*  
*Harold V. Anderson (1975)*  
*Lyman D. Toulmin (1975)*  
*Doris M. Curtis (1977)*  
*Stuart A. Levinson (1978)*  
*Fred L. Smith, Jr. (1978)*

*Charles W. Stuckey (1978)*  
*William R. Paine (1980)*  
*Frank E. Lozo, Jr. (1981)*  
*Gene B. Martin (1984)*  
*Bob F. Perkins (1984)*  
*Edward B. Picou, Jr. (1984)*  
*Claude M. Quigley, Jr. (1986)*  
*William P. S. Ventress (1986)*  
*Donald G. Bebout (1987)*  
*David E. Pope (1987)*  
*Emmett Ray Adams (1989)*  
*Jack O. Colle (1989)*  
*John B. Dunlap (1989)*  
*C. Clarence Albers (1990)*  
*Ben J. Petrusek (1990)*  
*Ernest A. Mancini (1991)*

---

**DISTINGUISHED HONORARY MEMBER**  
**GULF COAST SECTION**  
**SOCIETY OF ECONOMIC PALEONTOLOGISTS AND**  
**MINERALOGISTS**

*Charles G. Ventress (1989)*

---

**DISTINGUISHED SERVICE AWARDS**  
**GULF COAST SECTION**  
**SOCIETY OF ECONOMIC PALEONTOLOGISTS AND**  
**MINERALOGISTS**

*Michael J. Nault (1988)*  
*Richard P. Zingula (1988)*  
*Thomas H. Fett (1989)*

*Dennis Joseph Greig (1989)*  
*Bob F. Perkins (1991)*

---

**PAST RECIPIENTS  
BEST PAPER AWARDS  
AND A. I. LEVORSEN MEMORIAL AWARDS  
GULF COAST ASSOCIATION OF GEOLOGICAL SOCIETIES**

	First Award	Second Award	Third Award	Levorsen Award*
1959	J.E. Walters	R.L. Oakes	H.A. Bernard C.F. Major, Jr. B.S. Parrott	
1960	D.J. Hughes**	D.I. Andrews**	E.H. Rainwater**	
1961	R.D. Ocamb	D.I. Andrews J.C. Stipe	R.P. Fietz K.R. Scott W.E. Hayes	
1962	D.R. Tucker R.C. Wilshusen	R.J. Granberry W.R. Walton (tie)	G.C. Glaser (tie)	
1963	E.H. Rainwater	V. Peppard	S.L. Blanton, Jr.	
1964	E.H. Rainwater	D.R. Boyd B.F. Dyer	J.L. Arps	
1965	C.R. Kolb J.R. van Lopik	G.R. Kellough	Not awarded	
1966	B.J. Sloan, Jr.	W.R. Paine	R.E. Gernant R.V. Kesling	B.J. Sloan, Jr.
1967	H. Yarborough, Jr.	W.A. Price	J. Ewing (tie) J.C. Meyers (tie)	H. Yarborough, Jr.
1968	J.D. Myers	E.H. Rainwater	D.J. Hughes	J.D. Myers
1969	P.O. Roehl	J.K. Rogers	D.F. McNamee (tie) L.F. Brown (tie)	J.K. Rogers
1970	J.J. Amoruso	R.R. Berg	J.F. Harris	J.J. Amoruso
1971	H. Yarborough, Jr.	D.A. Reel (tie) G.M. Griffin B.J. Sloan J.A. Hartman (tie)	Not awarded	H. Yarborough, Jr.
1972	R.R. Berg	M.T. Halbouty	J.J. Amoruso	R.R. Berg
1973	R.D. Woods J.W. Addington	R.D. Ottman P.L. Keyes M.A. Ziegler	R.R. Berg F.L. Findley	J.M. Coleman L.D. Wright
1974	D.H. Kupfer	J.M. Coleman L.D. Wright J.N. Schyda T. Whelan	C.A. Parker	D.H. Kupfer
1975	W.L. Seal J.A. Gilreath	J.D. Myers	B.P. Baganz J.C. Horne J.C. Ferm	J.D. Myers

	First Award	Second Award	Third Award	Levorsen Award*
1976	J.D. Robinson J.A. Gilreath	J.W. Becher C.H. Moore	N. Neel	J.D. Robinson A.R. Troell
1977	D.K. Davies W.R. Almon	J.O. Lewis	J.O. Snowden W.B. Simmons E.B. Troughber R.W. Stephens	D.K. Davies W.R. Almon
1978	C.T. Siemers	J.W. Lund J.S. King R.E. Berlitz J.A. Gilreath	E.F. McBride	C.T. Siemers
1979	C.D. Winker	R.R. Berg	C.C. Christina K.G. Martin	R.R. Berg
1980	E.A. Mancini D.J. Benson	F.W. Harrison, Jr.	G.N. Gatenby	E.A. Mancini D.J. Benson
1981	E.C. Roy, Jr. M. Eidelbach N. Trumbly	J.L. Coleman, Jr. C.J. Coleman	G.J. Grabowski, Jr.	E.C. Roy, Jr. M. Eidelbach N. Trumbly
1982	T.E. Ewing S.C. Caran	D.J. Benson E.A. Mancini	R.R. Berg M.F. Habeck	T.S. Ewing S.C. Caran
1983	J.W. Cagle M.A. Khan	W.M. Ahr H.B. Hull, Jr.	T.E. Ewing (tie) C.H. Moore (tie)	J.W. Cagle M.A. Khan
1984	G. Kinsland	S.K. Stewart	C.L. Sartor S.R. Howard	G. Kinsland
1985	C.C. Walters M.R. Cassa	E.A. Mancini R.M. Mink B.L. Bearden	A.L. Workman J.S. Hanor	W.E. Galloway
1986	S.P. Dutton	A.H. Saller B.R. Moore	J.M. Coleman D.P. Prior H.H. Roberts	S.P. Dutton
1987	S.P. Dutton R. Finley K. Herrington	R. Evans	C. Black R. Berg	S.P. Dutton R. Finley K. Herrington
1988	M.P. Prescott	J.J. O'Brien I. Lerche	D.F. Williams I. Lerche	J.J. O'Brien I. Lerche
1989	Peter Hutchinson	N.M. Kuich	William Wade Jeffery Hanor Roger Sassen	Peter Hutchinson
1990	Michael P. Prescott	Philip L. Cook, Jr. John D. Bush John C. Marble Robert D. Schneeflock	Daniel Tearpock Harvey Pousson	Michael P. Prescott

\*— This award is given by the AAPG to the paper that best exemplifies creative ideas in oil and gas exploration (first award, 1966).

#— Glaser and Walton received First Place in the Paleontology Division for their 1962 paper.

\*\*—1985 through 1990 *Transactions* erroneously shown as not awarded.

**PAST RECIPIENTS  
BEST PAPER AWARDS  
GULF COAST SECTION  
SOCIETY OF ECONOMIC PALEONTOLOGISTS AND  
MINERALOGISTS**

	<b>Best Published Paper</b>	<b>Excellence of Presentation</b>
1990	George C. Flowers Wayne C. Isphording	Jory A. Pacht
1989	Ron Boyd John Suter Shea Penland	Harry H. Roberts
1988	Ron Boyd Shea Penland	Edward McFarlan, Jr.
1987	Wayne Isphording Dewayne Imsand George Flowers	Rowdy Lemoine (tie) Earle McBride (tie)
1986	Douglas F. Williams Dwight M. Trainor	Robert R. Berg
1985	Paul A. Thayer Harry H. Roberts	Gordon W. Fielder
1984	M.J. Ulrich J.R. Kyle P.E. Price	M. Kontrovitz
1983	E.C. Kusters A. Bailey	D.B. Prior
1982	J. Mazzullo	C.D. Winker
1981*	T.A. Daws A.V. Applegate J.C. Palacas	C.R. Handford

<b>1980</b>	<b>First Place</b>	<b>Second Place</b>	<b>Third Place</b>
1980**	A.W. Cleaves	I.L. van Heerden H.H. Roberts	T.A. Hansen
1979	L.C. Price J.L. Clayton L.L. Rumen	C.W. Poag R.C. Tresslar	R.E. Casey L.W. Gust R.A. Reynolds D.H. Williams A. Leavesley T. Duis J.M. Spaw

1980	First Place	Second Place	Third Place
1978	A. Thomson	C.W. Poag	J.A. Schiebout
1977	C.D. Winker J.D. Howard	W.C. Isphording	R.M. Looney V.R. Baker
1976	C.J. Stuart C.A. Caughney	R.R. Berg R.R. Powell	C.W. Poag P.C. Valentine
1975	J.L. Wilson	K.F. Wantland M.E. York	W.C. Isphording
1974	G.M. Friedman	W.F. Tanner C.R. Berquist	R.J. Moiola D. Weiser A.B. Spencer
1973	W.F. Tanner	R.J. Moiola A.B. Spencer	P.A. Thayer (tie) W.J. Cleary E. O'Donnell (tie) A.P. Wright
1972	W.F. Tanner	A.E. Weidie J.L. Wolleben E.F. McBride	P.A. Thayer D.A. Textoris
1971	R.W. Maxwell, Jr.	C.W. Poag	E.A. Shinn
1970	W.W. Hay S.W. Wise, Jr. R.D. Stieglitz	J.B. Dunlap, Jr.	W.L. Fisher C.V. Proctor, Jr. W.E. Galloway J.S. Nagle

\*— and Best Poster Award to E.A. Mancini

\*\*—Before 1981, awards were given for first, second and third place.

**OFFICERS OF MEMBER SOCIETIES****GULF COAST ASSOCIATION OF GEOLOGICAL SOCIETIES  
GULF COAST SECTION SOCIETY OF ECONOMIC  
PALEONTOLOGISTS AND MINERALOGISTS  
1990–1991**

**ALABAMA GEOLOGICAL SOCIETY,**  
P.O. Box 6184, University, Alabama 35486  
President Lawrence J. Rheams  
Vice President Rona Donahue  
Secretary Andrew Rindsberg  
Treasurer Lewis Dean

**LAFAYETTE GEOLOGICAL SOCIETY,**  
P.O. Box 51896, Lafayette, Louisiana 70505  
President Tim Osborne  
First Vice President Ellis Guilbeau  
Second Vice President Joe Phillips  
Secretary W.R. "Bill" Dale  
Treasurer Roland Lougue

**AUSTIN GEOLOGICAL SOCIETY,**  
P.O. Box 1302, Austin, Texas 78767  
President Peter Boone  
President Elect Rick Major  
Vice President Carolyn Condon  
Secretary Kevin Frenzel  
Treasurer Kathy Nelson

**MISSISSIPPI GEOLOGICAL SOCIETY,**  
P.O. Box 422, Jackson, Mississippi, 39205  
President Steve Ingram  
First Vice President Mike A. Noone  
Second Vice President Brad Truett  
Secretary Rick Erickson  
Treasurer Lindsey Stewart

**BATON ROUGE GEOLOGICAL SOCIETY, INC.,**  
P.O. Box 19151, University Station, Baton Rouge,  
Louisiana 70893  
President Michael W. Killeen  
Vice President Dwight Easterly  
Secretary Bill Walter  
Treasurer John W. Musser

**NEW ORLEANS GEOLOGICAL SOCIETY,**  
P.O. Box 52172, New Orleans, Louisiana 70152  
President Robert B. Branson  
Vice President Emmett Adams  
President Elect Jack C. Langford  
Secretary Mark Gallagher  
Treasurer Gary Jacobs

**CORPUS CHRISTI GEOLOGICAL SOCIETY,**  
P.O. Box 1068, Corpus Christi, Texas 78403  
President Rick Railsback  
Vice President Greg Dennis  
President Elect Wayne Croft  
Secretary Sebastian Wiedmann  
Treasurer Frank Cornish

**SHREVEPORT GEOLOGICAL SOCIETY,**  
P.O. Box 750, Shreveport, Louisiana 71162  
President B. Ross White  
First Vice President Roger Berg  
Second Vice President L. Chris Johnson  
Secretary Fred Meendsen  
Treasurer Robert Reese

**EAST TEXAS GEOLOGICAL SOCIETY,**  
P.O. Box 216, Tyler, Texas 75710  
President C.F. "Casey" Clawson, II  
Vice President Charles Doubek  
Secretary-Treasurer Al Jasper

**SOUTH TEXAS GEOLOGICAL SOCIETY,**  
D-100 Petroleum Center, San Antonio, Texas 78209  
President Martha M. Guethe  
President Elect E. Gerald Rolf  
Vice President Barry A. Brooner  
Secretary William P. Wilbert  
Treasurer Stanley L. Perkins, Jr.

**HOUSTON GEOLOGICAL SOCIETY,**  
7171 Harwin, Suite 314, Houston, Texas 77036  
President Cyrus Strong  
President Elect Patrick T. Gordon  
Vice President John M. Biancardi  
Secretary Ann Ayers Martin  
Treasurer Sandi M. Barber

**SOUTHEASTERN GEOLOGICAL SOCIETY,**  
P.O. Box 1634, Tallahassee, Florida 32302  
President Tom Scott  
Vice President Katherine Ellins  
Secretary/Treasurer Ken Campbell  
Membership Secretary Rich Deurling

# GULF COAST ASSOCIATION OF GEOLOGICAL SOCIETIES

## BOARD OF DIRECTORS 1990–1991

PRESIDENT .....	Clyde E. Harrison
VICE PRESIDENT .....	John C. Marble
SECRETARY .....	Howard W. Kiatta
TREASURER .....	Larry D. Bartell
PAST PRESIDENT .....	Peter G. Gray
FINANCE COMMITTEE CHAIR .....	Gerald A. Cooley

### REPRESENTATIVES FROM MEMBER SOCIETIES

Alabama Geological Society .....	Lawrence J. Rheams
Austin Geological Society .....	Peter Boone
Baton Rouge Geological Society .....	Michael W. Killeen
Corpus Christi Geological Society .....	Rick Railsback
East Texas Geological Society .....	C.F. "Casey" Clawson, II
Houston Geological Society .....	Cyrus Strong
Lafayette Geological Society .....	Tim Osborne
Mississippi Geological Society .....	Steve Ingram
New Orleans Geological Society .....	Robert B. Branson
Shreveport Geological Society .....	B. Ross White
South Texas Geological Society .....	Martha M. Guethe
Southeastern Geological Society .....	Tom Scott

# GULF COAST ASSOCIATION OF GEOLOGICAL SOCIETIES

## STANDING COMMITTEES June, 1991

**A.A.P.G. Advisory**  
Robert W. Sabaté

**Awards and Nominations**  
Gary Lauman, Chair  
Peter G. Gray  
William R. Payne  
James A. Hartman  
John J. Amoruso

**Finance**  
Gerald A. Cooley, Chair  
Matthew Daura  
Clyde E. Harrison  
E. Stewart Hastings  
Marvin L. Smith

**Financial Aid to Students**  
Valerie M. Ewing, Chair  
Willard Leutze  
Dewitt C. Van Sieten

**Historical**  
David E. Pope, Chair

**Long-Range Planning**  
C. Lane Sartor, Chair  
Peter G. Gray  
William R. Payne  
James A. Hartman  
Gerald A. Cooley  
Clyde E. Harrison (ex officio)

**Publications**  
Robert E. Boyer, Chair  
David B. Bieler  
Edward C. Roy, Jr.  
William C. Ward  
E.G. (Jerry) Wermund



**GULF COAST SECTION**  
**SOCIETY OF ECONOMIC PALEONTOLOGISTS AND**  
**MINERALOGISTS**  
**EXECUTIVE COMMITTEE**  
**1990–1991**

---

**PRESIDENT**

Denise M. Butler  
BP Exploration  
5151 San Felipe  
P.O. Box 4587  
Houston, TX 77210-4587  
(713) 552-3867

**SECRETARY**

Nancy L. Engelhardt-Moore  
Amoco Production Co.  
P.O. Box 3092  
Houston, TX 77253  
(713) 556-3389

**PRESIDENT ELECT**

Michael J. Nault  
BP Exploration  
5151 San Felipe  
P.O. Box 4587  
Houston, TX 77210-4587  
(713) 552-6405

**TREASURER**

Kurt R. Geitzenauer  
ARCO Oil & Gas Company  
P.O. Box 1346  
Houston, TX 77251  
(713) 584-6725

**VICE PRESIDENT**

Charles C. Smith  
Unocal Corporation  
P.O. Box 4551  
Houston, Texas 77210-4551  
(713) 287-7443

**PAST PRESIDENT**

Sheila C. Barnette  
BP Exploration  
5151 San Felipe  
P.O. Box 4587  
Houston, TX 77210-4587  
(713) 552-3820

---

**GCSSEPM FOUNDATION**

**TRUSTEES**

William P.S. Ventress, Chairman  
Chevron USA, Inc.  
935 Gravier Street  
New Orleans, LA 70112  
(504) 592-6761

Arthur S. Waterman  
Paleo-Data, Inc.  
6619 Fleur de Lis Drive  
New Orleans, LA 70124  
(504) 488-3711

C. Clarence Albers  
14703 Waynewood  
Cypress, TX 77429  
(713) 373-0468

**EXECUTIVE DIRECTOR**

Bob F. Perkins  
1416 Creekford Drive  
Arlington, TX 76012  
(817) 265-9234

# PAST OFFICERS

## GULF COAST SECTION SOCIETY OF ECONOMIC PALEONTOLOGISTS AND MINERALOGISTS

	PRESIDENT	VICE-PRESIDENT	SECRETARY	TREASURER
1953-1954	Stuart A. Levinson	Grover E. Murray	William H. Akers	Frank V. Stevensen
1954-1955	Charles W. Stuckey, Jr.	E. H. Rainwater	William H. Akers	Fred L. Smith, Jr.
1955-1956	E. H. Rainwater	Frank S. Westmoreland	Hugh A. Bernard	Eleanor T. Caldwell
1956-1957	Lloyd M. Pyeatt	J. O. Colle	H. Dillingham, Jr.	Eleanor T. Caldwell
1957-1958	J. O. Colle	Fred L. Smith, Jr.	Harold V. Andersen	William G. Parker
1958-1959	Marcus A. Hanna	Claude M. Quigley	Fred E. Smith	Bernard L. Hill, Jr.
1959-1960	David E. Pope	A. D. Ellis, Jr.	Gordon C. Munsey	H. A. Chun
1960-1961	Claude M. Quigley	Harold V. Andersen	E. Ann Butler	Edward Marks
1961-1962	Harold V. Andersen	Theodore D. Cook	Benjamin J. Petrussek	Albert D. Warren
1962-1963	Albert D. Warren	Ernest H. Horton	Blair S. Parrott	Henry H. Phillips
1963-1964	Lyman D. Toulmin	E. Ann Butler	Charles C. Albers	John E. Kilgore
1964-1965	Howard L. Tipsword	Benjamin J. Petrussek	D. Jeter Smith	Emmett R. Adams
1965-1966	John B. Dunlap, Jr.	John J. W. Rogers	M. Ray Bane	Charles B. Morris
1966-1967	Hubert C. Skinner	Richard P. Zingula	Gene Ross Kellough	Gene B. Martin
1967-1968	Benjamin J. Petrussek	Dan McGregor	Garrett Briggs	Herbert A. Elliott, Jr.
1968-1969	William A. Atlee	Edgar B. O'Quinn	James W. Fowler	William E. Steinkraus
1969-1970	Fred L. Smith, Jr.	Kenneth L. Loep	Robert K. Sylvester	C. Wylie Poag, Jr.
1970-1971	Jules Braunstein	Douglas E. Jones	Walter H. Trenchard	Robert N. Davids
1971-1972	William W. Hay	William E. Steinkraus	Karl J. Koenig	Gerald R. Stude
1972-1973	C. Wylie Poag, Jr.	Emmett R. Adams	Gerald R. Stude	Joan B. Strough
1973-1974	Edward B. Picou, Jr.	Walter H. Trenchard	Lawrence C. Menconi	J. Loyd Tuttle, Jr.
1974-1975	Emmett R. Adams	Clifton A. Couture	Herbert A. Elliott, Jr.	Doris M. Curtis
1975-1976	James L. Lamb	Lawrence C. Menconi	William S. Grubb	John L. Carney
1976-1977	Clifton A. Couture	Eleanor T. Caldwell	Sherwood W. Wise, Jr.	Joseph E. Boudreaux
1977-1978	Gerald R. Stude	William P.S. Ventress	Gary R. Roberson	George C. Esker, III
1978-1979	Willard P. Leutze	Bob F. Perkins	Walter P. Kessinger	Kenneth A. Hodgkinson
1979-1980	Gene B. Martin	John L. Carney	Mary Ann Raffle	Arthur S. Waterman
1980-1981	Bob F. Perkins	Don G. Bebout	Sheila C. Barnette	Ted Karmen
1981-1982	William P.S. Ventress	Kenneth A. Hodgkinson	Brian J. O'Neill	Kurt Geitzenauer
1982-1983	John L. Carney	Ernest A. Mancini	Susan J. Conger Morris	Kevin C. Kilmartin
1983-1984	Don G. Bebout	Michael J. Nault	Susan J. Conger Morris	Nelson B. Yoder
1984-1985	Ernest A. Mancini	J. M. Crosbie	John G. McPherson	John B. Anderson
1985-1986	Susan J. Conger Morris	Arthur S. Waterman	John G. McPherson	Richard E. Constans
1986-1987	Charles L. McNulty	Denise M. Butler	Kurt R. Geitzenauer	Sylvester Q. Breard, Jr.
1987-1988	Arthur S. Waterman	Brian J. O'Neill	Ramil C. Wright	Charles G. Rosato
1988-1989	Samuel P. Miano	Charles C. Smith	Richard H. Fillon	Bethanne Breisacher
1989-1990	Sheila C. Barnette	Michael J. Nault	Nancy Englehardt-Moore	Michael W. Center
1990-1991	Denise M. Butler	Charles C. Smith	Nancy Englehardt-Moore	Kurt Geitzenauer

# PAST OFFICERS AND CONVENTION CHAIRMEN

## GULF COAST ASSOCIATION OF GEOLOGICAL SOCIETIES

	HOST CITY	PRESIDENT	VICE-PRESIDENT	SECRETARY	TREASURER	CONVENTION CHAIRMEN
1951	New Orleans	L. Bowling	T. H. Philpott		E. M. Baysinger	
1952	Corpus Christi	W. M. Chaddick, Jr.	W. A. Gorman	J. S. Spencer	T. D. Barber	W. J. Nugent
1953	Shreveport	R. T. Wade	D. D. Utherback	W. A. Peterson	K. Carter	
1954	Houston	W. R. Canada	W. H. Knight	F. H. Webster	E. W. Kimball	
1955	Biloxi	A. E. Blanton	L. D. Traupe	C. W. Holcomb	C. C. Barber	R. D. Sprague
1956	San Antonio	R. L. Layden	M. W. Beckman	R. A. Davis	A. F. Scott	G. I. Joyce
1957	New Orleans	H. N. Hickey	P. Montgomery	E. T. Musselman	K. C. Anderson	T. H. Philpott
1958	Corpus Christi	E. A. Lohse	R. W. Grayson	I. F. Moss	W. H. Wallace, Jr.	R. C. Wilshusen
1959	Houston	G. C. Hardin, Jr.	L. Harvey	W. W. Woolfolk	J. A. Wheeler	O. G. Bell
1960	Biloxi	M. F. Kirby	D. N. Osburn	A. W. Wood	E. G. Jeffreys	A. E. Blanton
1961	San Antonio	D. Dassow	E. P. Roth	H. O. Woodbury	E. L. Arnes	L. L. Palmer
1962	New Orleans	T. H. Philpott	J. C. Byrd	W. E. Bancroft	K. Soule	L. H. Meltzer
1963	Shreveport	I. C. Byrd	E. Knott	R. W. Luker	R. E. Rogers	H. I. Tyler
1964	Corpus Christi	K. Knott	R. E. Fairchild	K. C. Hartkins, Jr.	D. A. Pedrotti	B. F. Dryer
1965	Houston	R. E. Fairchild	A. M. Borland	W. A. Robbins, Jr.	J. L. George, Jr.	E. A. Lohse
1966	Lafayette	A. M. Borland	J. H. Hensley	M. L. Frazier, Sr.	I. S. Schoelen	R. R. Copeland
1967	San Antonio	W. L. Stapp	M. D. Horton	L. G. Hughes	L. C. Bryant	M. O. Turner
1968	Jackson	M. D. Horton	R. O. Vernon	J. W. Yon, Jr.	E. D. Minihan	L. E. Warren
1969	Miami	R. O. Vernon	H. J. Tyler	C. E. Brown	C. W. Hendry, Jr.	H. S. Puri
1970	Shreveport	H. J. Tyler	L. L. Meltzer	M. L. Dwight	B. C. Tucker	I. O. Goffe
1971	New Orleans	L. H. Meltzer	D. R. Boyd	M. H. Oakes	P. G. Gray	R. G. Williamson
1972	Corpus Christi	D. R. Boyd	F. M. Schall, Jr.	M. E. Hole, Jr.	J. E. Melton	J. M. Sides
1973	Houston	F. M. Schall, Jr.	S. J. Lysinger	T. J. Eby, Jr.	P. W. Cawthon, Jr.	C. E. Harrison
1974	Lafayette	S. J. Lysinger	W. H. Moore	W. E. Taylor	I. L. Bellamy	F. W. Harrison, Jr.
1975	Jackson	W. H. Moore	C. L. Sartor	I. T. Palmer	H. L. Ladhner	C. H. Williams, Jr.
1976	Shreveport	C. L. Sartor	R. E. Boyer	A. E. Bell	C. E. Brown	L. E. Jordan
1977	Austin	R. E. Boyer	P. G. Gray	R. M. Swords	F. L. Osborne, Jr.	E. G. Wernund, Jr.
1978	New Orleans	R. W. Stephens	E. C. Roy, Jr.	S. L. Perkins	C. J. Corona	J. Braunstein
1979	San Antonio	E. C. Roy, Jr.	F. W. Harrison, Jr.	J. W. Shirley	R. A. Anderson	M. A. Munchrath
1980	Lafayette	F. W. Harrison, Jr.	P. M. Strunk	T. J. Winterrnute	W. R. Payne	Wilson Humphrey
1981	Corpus Christi	P. M. Strunk	J. J. Amoruso	C. G. Beckwith	C. A. Baird	J. O. Lewis
1982	Houston	J. J. Amoruso	S. C. Childress	S. A. Horton	P. D. Cate	J. C. Marble
1983	Jackson	S. C. Childress	J. P. Palmer	C. S. Cook	E. W. Saye	J. M. Forgotson, Jr.
1984	Shreveport	J. T. Palmer	E. G. Wernund	R. Everett	D. C. Rarcliff	L. E. Ganner
1985	Austin	E. G. Wernund	D. E. Pope	B. D. David	F. E. Lindfors-Kearns	H. L. Roland
1986	Baton Rouge	D. E. Pope	R. H. Sams	M. T. Tobin	T. Cooper	D. F. Tobin
1987	San Antonio	R. H. Sams	I. A. Hartman	R. W. Sabaté	J. E. Bailey	C. C. Baker
1988	New Orleans	I. A. Hartman	W. R. Payne	B. E. Gaither	T. B. Henderson	G. M. Heinzelmann
1989	Corpus Christi	W. R. Payne	P. R. Gray	H. Fielding	B. Smart	B. E. Lock
1990	Lafayette	P. G. Gray	C. E. Harrison	H. W. Kiatta	L. D. Bartell	D. L. Smith
1991	Houston	C. E. Harrison	J. C. Marble			C. Noll

# OFFICERS AND COMMITTEES

## Forty-First Annual Meeting 1991

### OFFICERS

<b>President</b> Clyde E. Harrison 1100 Milam, #3640 Houston, TX 77002	<b>Vice President</b> John C. Marble 175 E. Capital St., Suite 240 Jackson, MS 39201	<b>Secretary</b> Howard W. Kiatta 910 Travis #1427 Houston, TX 77002	<b>Treasurer</b> Larry D. Bartell Esperson Building 1520 Houston, TX 77002
---	---	---	---

### GENERAL CO-CHAIRMEN & VICE CHAIRMEN

<b>General Co-Chairman</b> Dan L. Smith Texoil Company 1600 Smith, Suite 4000 Houston, TX 77002	<b>General Co-Chairman</b> Chuck Noll Neumin Production Co. P.O. Box 769, 103 Fannin Rd. Point Comfort, TX 77978	<b>Vice Chairman—GCS SEPM</b> Michael J. Nault BP Exploration P.O. Box 4587 Houston, TX 77210
---	--	---

### 1991 CONVENTION COMMITTEES

<b>Advertising</b> Jerry Watson—Chair Chris Taylor David Fontaine	<b>Entertainment</b> J.S. Laurent—Chair Dan Bump Howard Kiatta Andy Jurasin Deborah Sacrey	<b>Editorial—GCS-SEPM</b> Norman C. Rosen—Chair David Calloway Bill Hill Roger Sassen	<b>Short Courses</b> John M. Biancardi—Chair
<b>Alumni Functions</b> Frank Jones—Chair	<b>Exhibits</b> Gerald A. Cooley—Chair Sandi Barber James L. Bechnel Matthew L. Bognar Stu Hastings Gary W. Lauman Carol M. Lucas Warren D. Millican Marvin L. Smith Synthia E. Smith	<b>Judging/Awards—GCAGS</b> George E. Kronman—Chair	<b>Tobin Theater</b> Steven H. Shirley—Chair
<b>Arrangements</b> William G. Hargett—Chair Jeannine Burks Mark A. Tantillo Tom McCarroll Cindy Lamb	<b>Field Trips</b> Martin Oldani—Chair Paul Britt Wynn Gajkowski Gary Moore Jaffrey Requarth Richard Howe Bill Baehr Carl Norman	<b>Judging/Awards—GCS-SEPM</b> Sylvester Q. Breard—Chair Michael J. Nault	<b>Ice Breaker</b> Marvin L. Smith—Chair Sandi Barber James L. Bechnel Gerald A. Cooley Stu Hastings Carol M. Lucas
<b>Athletic Events</b> Dave Lazor—Chair Jerry Sides Mike Scholars Bill Howell Bianchi Veal Norma Jones Jeff Lund Gayland Freeland	<b>HGA President</b> Kathryn Bennett	<b>Posters</b> Pat T. Gordon—Chair	<b>Registration</b> John Hefner—Chair Paul Hoffman
<b>Audio Visual</b> Matthew W. Daura—Chair Dave Cherry	<b>Housing</b> John A. Adamick—Chair	<b>Printing</b> Joe Samuels—Chair	<b>Spouses Activities</b> Marilyn Harrison—Co-Chair Mary Folk—Co-Chair Gwinn Lewis Kathryn Bennett
<b>Crisis</b> Howard W. Kiatta—Chair	<b>Editorial—GCAGS</b> Deet Schumacher—Chair	<b>Program GCAGS</b> Dean N. Malouta—Chair Sam H. Limerick Nick F. Kuich Cathy Buchanan Deet Schumacher	<b>Student Program</b> Bill Dupre—Chair
<b>DPA Luncheon</b> Dave Fontaine—Chair		<b>Program GCS/SEPM</b> Millis H. Oakes—Chair Lillian Roberts Don Riley John Jordan Dr. William Dupre	<b>Support Systems</b> Stu Hastings—Chair Andy Bacho James L. Smith
<b>Employment Assistance</b> Steve Brachman—Chair		<b>Publicity</b> Pat Donais—Chair	<b>Transportation</b> Greg Burns—Chair

# BYLAWS

## GULF COAST ASSOCIATION OF GEOLOGICAL SOCIETIES

### PART A: ORGANIZATION

#### ARTICLE 1.—OBJECT

This is a non-profit organization and shall be known as the "Gulf Coast Association of Geological Societies, Inc." It is hereinafter referred to as "This Association."

The object of This Association is to provide for discussion and publication of papers on subjects and problems coming within the scope of the Geological profession and with particular emphasis on Gulf Coast geology.

#### ARTICLE 2.—ORGANIZATION

This Association is an organization of AAPG-affiliated Geological Societies in the Gulf Coast area.

##### SECTION 1.

The business of This Association shall be transacted by a Board of Directors composed of one representative from each member society and the President, Vice President, Secretary, Treasurer and Past President. The Vice President, Secretary, and Treasurer shall be elected by the Board of Directors at the annual meeting. At the request of the Vice President's society, however, the Secretary and Treasurer may be elected at a prior Board meeting but they will not take office until after the annual meeting. The Secretary and Treasurer shall be non voting members of the Board of Directors. The Secretary and Treasurer shall be nominated by the Executive Committee of the local Geological Society next in line to host the annual meeting. The Vice President shall be nominated by the Executive Committee of the host society for the annual meeting two years hence and shall accede to the Presidency. Thus each year the President, Secretary, and Treasurer will be from the host society with the Vice President providing continuity with the Board of Directors as he assumes the Presidency in the ensuing year. The duties of these officers shall be those customary to their respective offices.

The GCAGS representative to the Advisory Council of American Association of Petroleum Geologists shall be selected by the Board of Directors of GCAGS and shall be an ex officio, non-voting member of the GCAGS Board of Directors.

Each member society shall designate a representative to the Board of Directors and in the event the chosen representative cannot attend any given Board of Directors meeting, an alternate representative shall be appointed by the member society to attend and vote in the absence of the representative. The representative, when practicable, shall be an officer or past officer of the society he represents.

Each society shall have one vote on actions taken by the Board of Directors with the exception that the host society, the next annual host society and the immediate past host society will be entitled to two votes by virtue of their members holding the offices of President, Vice President, and Past President.

The officers of the Board of Directors shall be elected for a term of one year. They shall be elected and assume their duties as soon after the annual meeting of This Association as is practicable, except as noted in Paragraph 1 with regard to the Secretary and Treasurer. Any vacancies shall be filled by the Board of Directors as provided above in Paragraph 1.

##### SECTION 2.

The business of This Association shall be conducted by the Board of Directors. A simple majority vote of the members present at

meetings is required to effect decisions, except in those matters which require a greater majority, as set forth in these Bylaws.

A quorum shall consist of more than one half of the voting members of the Board of Directors.

The Executive Committee composed of the President, Vice President, Secretary, Treasurer, Past President, and Finance Committee Chairman shall have the authority to transact business of an emergency nature between meetings. Any business so transacted shall be subject to ratification by the Board of Directors at its next regularly scheduled meeting. A quorum of the Executive Committee shall be three members.

#### ARTICLE IV—MEETINGS

There shall be an annual meeting of This Association, the time and place of which shall be determined by the Board of Directors. Additional meetings may be called at the discretion of the Board of Directors.

#### ARTICLE V—PUBLICATIONS

There shall be an annual Transactions published by This Association, which shall contain papers presented at the annual meeting, and such other material as selected by the Board of Directors. The Board of Directors is authorized to have published additional bulletins, and other material which they feel will further the object of This Association.

#### ARTICLE VI—FUNDS

The funds of This Association shall be deposited in any national bank or Federally insured Savings and Loan Association selected by the Finance Committee, to the credit of This Association, or invested in U.S. Government Bonds at the discretion of the Finance Committee.

#### ARTICLE VII—AMENDMENTS

Amendments to this PART A and to the Articles of Incorporation may be proposed by the Board of Directors, or by any two member societies. Proposed amendments shall be submitted to each of the member societies in writing. It shall require an affirmative vote of three fourths of the member societies to ratify such an amendment.

#### ARTICLE VIII—LATER AFFILIATION

Non-member Geological Societies in the Gulf Coast Area which are affiliated with AAPG may petition the Board of Directors for membership and shall be accepted by an affirmative vote of three fourths of the Board of Directors.

#### ARTICLE IX—RESIGNATION

Any member society may resign from This Association at any time by written notice to the Board of Directors. There shall be no obligation to transfer to such resigning society any portion of This Association's funds.

#### ARTICLE X—DISSOLUTION

This Association shall terminate at such time as a majority of the member societies shall so vote. Upon dissolution all funds and other property shall be divided as mandated by the Articles of Incorporation.

## PART B: COMMITTEES, FINANCES

### ARTICLE I—COMMITTEES

The President, with the approval of the Board of Directors, shall appoint the Annual Meeting Chairman and the Publications Committee Chairman, appointments being for one year.

#### SECTION 1: ANNUAL MEETING CHAIRMAN

The Annual Meeting Chairman shall direct the staging of the annual meeting, and shall have the authority to appoint such additional committees as he deems necessary.

#### SECTION 2: PUBLICATIONS

This committee shall be responsible for publishing all publications of This Association except the Transactions which falls under the purview of the Annual Meeting Chairman. Sales and storage of all GCAGS publications, including the Transactions, are the responsibility of this committee. The chairman shall provide annually to the Finance Committee an inventory of the GCAGS publications.

#### SECTION 3:

The President, with the approval of the Board of Directors, may appoint such additional committees as are necessary to conduct the business of This Association.

### ARTICLE II—TREASURER

The Treasurer shall have the authority to issue checks against the Annual Meeting bank account of This Association on his sole signature, but in the event of his absence or incapacity to act, withdrawals or payments by check may be made on the signature of the President during continuance of the absence, or incapacity, of the Treasurer. In this event, the identity and authority of the President, and the circumstances relating to the absence or incapacity of the Treasurer shall be certified by the Board of Directors, if so required by the depository. The Treasurer shall submit a financial report on the Annual Meeting at each meeting of the Board of Directors and shall keep a set of books in accordance with good accounting practices. He shall submit the books of the Annual Meeting to the Finance Committee by March 1st fol-

lowing the Annual Meeting. The office of Treasurer shall be bonded as directed by the Board of Directors.

### ARTICLE III—FINANCE COMMITTEE

The Finance Committee shall be responsible for investing and managing the funds of the Association. They shall be responsible for advancing to the Treasurer the necessary funds for operating the Annual Meeting and shall disburse funds for expenses and projects not related to the Annual Meeting as directed by the President upon approval by the Board of Directors. The Committee shall have authority to invest the funds as outlined in Article VI of PART A hereof. They shall prepare a financial report on the Association's funds and submit it at each meeting of the Board of Directors. They shall also keep an inventory of publications and equipment owned by the Association. They will keep a set of books in accordance with good accounting practices and will submit the books for auditing as requested by the Board of Directors. The Committee will oversee the preparation and submittal of the Association's Annual Income Tax Return. The Committee will also keep a file of these financial reports, as well as the report of the Treasurer for each Annual Meeting, for access by Officers and representatives of the annual meeting for future years. The Committee shall consist of five members serving staggered three year terms, such that each year one to three members will complete their terms and one to three new members will be appointed. The President of the Association, with the approval of the Board of Directors, shall appoint the members of the Finance Committee and select its chairman. Members of the Finance Committee shall be bonded as directed by the Board of Directors. All checks of greater than \$1,000 shall be signed by two of the Finance Committee members.

### ARTICLE IV—AMENDMENTS

This PART B may be amended by an affirmative vote of three fourths of the Board of Directors.

### ARTICLE V—DUES

There shall be no dues.

# BYLAWS

## GULF COAST SECTION—SOCIETY OF ECONOMIC PALEONTOLOGISTS AND MINERALOGISTS

### ARTICLE 1.—OBJECT

**1.01**—The object of the Gulf Coast Section of the Society of Economic Paleontologists and Mineralogists is to promote the science of stratigraphy in the Gulf Coast states through research in paleontology and sedimentary petrology, especially as it relates to petroleum geology. The Corporation, herein referred to as the "Section," will be closely associated with the Gulf Coast Association of Geological Societies and will cooperate with it and with the local geological societies of which it is composed for the furtherance of mutual objectives.

### ARTICLE 2.—MEMBERS

**2.01**—The Section shall have members, associate members, charter members, and honorary members.

**2.02**—Members shall be persons engaged in paleontologic, petrographic or stratigraphic studies that have application to the geology of petroleum, who are members or associate members of the Society of Economic Paleontologists and Mineralogists and who work or reside in the Gulf Coast province of the states of Texas, Louisiana, Mississippi, Alabama, Georgia or Florida, or whose interest or work is principally within these states. Membership, once obtained, shall not be dependent upon continued residence in the aforementioned states.

**2.03**—Associate members shall be persons engaged in paleontologic, petrographic or stratigraphic studies that have application to the geology of petroleum, who work or reside in the Gulf Coast province of the above mentioned states, and who are not members or associate members of the Society of Economic Paleontologists and Mineralogists. Associates shall enjoy all the privileges of membership, save that they shall not hold office. Election to membership in the Society of Economic Paleontologists and Mineralogists will automatically advance associates to members.

**2.04**—Charter members are those whose application for membership were received before the first nomination of officers. They shall enjoy all the privileges of members and, hereinafter, are included in all references to "members."

**2.05**—The Council may elect as honorary members persons who have contributed distinguished service to the science of stratigraphy, paleontology or sedimentary petrology, especially as they relate to petroleum geology in the Gulf Coast. Honorary members shall not be required to pay dues.

**2.06**—Each candidate for membership shall submit to the Secretary an application on a form authorized by the Council for this purpose.

**2.07**—New members and associates enrolled after September 15 shall be considered as having paid their dues for the next calendar year.

### ARTICLE 3.—COUNCIL AND OFFICERS

**3.01**—Executive authority of the Section is vested in a board of directors known as the "Council" consisting of six members who are duly elected by the members, as follows: President, President-Elect, Vice President, Secretary, Treasurer, and the most recently retired Past President.

**3.02**—The President shall discharge the usual duties of a president, as well as act as presiding officer at all meetings of the Section and Coun-

cil. He shall appoint an Editor, Program Chairman, Committee Chairmen and Business Representatives.

**3.03**—The Vice President shall assume the duties of the President in the case of the absence or disability of the latter. He shall also be Chairman of the Membership Committee and Chairman of the Employment Counseling Committee.

**3.04**—The Secretary shall keep records of the proceedings of the Section and a complete list of the membership. He shall attend to the preparation and mailing of notices, membership application blanks and other materials necessary to the business of the Section.

**3.05**—The Treasurer shall have custody of all funds of the Section. He shall keep account of the receipts and disbursements, and submit his account to the membership at the end of each year.

**3.06**—The Council shall consider all candidates for membership and pass on the qualifications of the applicants; shall have control and management of the affairs and funds of the Section; shall designate the time and place of the Annual Meeting.

**3.07**—The President and Vice President shall not serve for more than one (1) year, except that if the Vice President succeeds to the position of Acting President, he may be elected to a full term as President.

**3.08**—In the event that neither the President nor Vice President is available to serve as presiding officer of the Section, the immediate Past President shall assume the President's duties.

**3.09**—The President-Elect shall serve for one (1) year as such, and in the following year he shall assume the office of President. He shall have no administrative authority except as a member of the Council. He shall acquaint himself with all the details of the office of President and generally prepare himself to serve as President. He shall be responsible for the preparation of the annual meeting for the ensuing year.

**3.10**—A vacancy occurring in the offices of Vice President, Secretary or Treasurer shall be filled by Council appointment.

**3.11**—A vacancy occurring in the office of President-Elect shall be filled by mail ballot by the membership through a special election called by the Council.

**3.12**—The Secretary and Treasurer shall serve for a term of two (2) years. These offices shall be renewable through election.

### ARTICLE 4.—MEETINGS OF MEMBERS

**4.01**—The Section shall hold at least one stated meeting each year, which shall be known as the Annual Meeting. This meeting will usually be held in conjunction with the Annual Meeting of the Gulf Coast Association of Geological Societies.

**4.02**—The program for the Annual Meeting shall be arranged by the Program Chairman in conjunction with the Chairman designated by the Gulf Coast Association of Geological Societies to arrange for its own program. In general, it will be desirable that the contributions from members of the Section be included in the main program rather than being allotted to a separate session.

**4.03**—At the time of the Annual Meeting, a Business Meeting shall be held for the transaction of Section business.

**ARTICLE 5.—AMENDMENT OF BYLAWS**

**5.01**—These Bylaws may be amended by a two-thirds vote of returned mail ballots received by the Secretary sixty (60) days after proposal of amendments with provision for vote is mailed to the members. Any proposed amendments must have the approval of a majority of the Council before being submitted to the members.

**5.02**—A petition containing the signatures of twenty (20) active members is considered sufficient to bring before the Council a proposed change in the Bylaws. A majority vote of the Council is also considered sufficient to initiate a proposed change.

**ARTICLE 6.—DUES**

**6.01**—The fiscal year of the Section shall commence on October 1 and expire on September 30 of the following year.

**6.02**—The annual dues of the members and associates of the Section shall be eight dollars (\$8.00). Penalty of fifty cents (.50) shall be assessed for late payments. The fifty cents (.50) late penalty shall be waived upon payment of dues for two more years.

**6.03**—A bill for dues shall be mailed to each member and associate before January 1 of each year. Members and Associates who have not paid their annual dues by April 1 shall be dropped from the membership roles.

**6.04**—Members and Associates dropped for non-payment of dues may apply to the Council for reinstatement and be reinstated by majority vote of the Council.

**6.05**—Members or Associates may, at their discretion, pay their annual dues in advance for periods of up to five (5) years.

**ARTICLE 7.—FINANCIAL PROCEDURE**

**7.01**—No officer or member shall enter into contract or disburse any of the Section's funds, without the co-signature of a member of the Council. Disbursal of a sum in excess of Five Hundred Dollars (\$500.00) must be approved by a majority of the Council.

**ARTICLE 8.—ELECTIONS**

**8.01**—The President shall appoint two (2) nominating committees, instructing each committee to submit nominations for President-Elect, Vice President, Secretary, and Treasurer. These nominations shall be in the Secretary's hands before July 15. If desired, the same person may be nominated by the two committees for the offices of Secretary and Treasurer, but the nominations for President-Elect and Vice President shall not include the names of the same person on the two slates. The nominations of the first committee to file its report will have precedence in case of overlapping nominations, and the other committee shall then be requested to change its nomination. A candidate for office must be an active member and reside in the Gulf Coast at the time of his nomination.

**8.02**—Ballots containing the nominations for officers, arranged alphabetically under each office, shall be prepared by the Secretary and

mailed to each member of the Section on or before July 15. The ballots received by the Secretary before September 15 shall be counted by him. Receipt of a plurality of the votes cast for any office shall constitute election. In case of a tie vote, members of the Council shall cast one additional deciding vote.

**8.03**—Results of balloting shall be announced at the Annual Meeting, and the new officers shall enter upon duty at the adjournment of the Meeting.

**ARTICLE 9.—PUBLICATIONS**

**9.01**—The Section Editor, appointed by the President, shall actively solicit papers from the Section membership for presentation at the Annual Meeting. He shall cooperate with the editor of the Gulf Coast Association of Geological Societies' Transactions volume in preparing papers delivered at the meeting for publication in this volume. He shall cooperate with the editors of the Society of Paleontologists and Mineralogists' journals by helping to arrange for publication in these periodicals of suitable papers which come to his attention.

**9.02**—Members of the Section may purchase one copy of each Section publication at a discount rate of 20 percent off the advertised price.

**ARTICLE 10.—BUSINESS REPRESENTATIVES**

**10.01**—The President shall appoint one representative from each group of members in each local geological society affiliated with the Gulf Coast Association of Geological Societies and in other localities as needed. Each representative shall have an up-to-date list of the members residing in his vicinity. He will notify these members concerning any matter of Section policy which may be relayed to him by the President and shall have the authority to convene a meeting of those members to determine their views concerning Section affairs. He will report the results of such meetings to the President of the Section. He will cooperate with the Section Editor in the soliciting of papers to be presented at the Annual Meeting and with the Chairman of the Membership Committee in recruiting new members for the Section.

**ARTICLE 11.—AUDIT**

**11.01**—The President shall appoint an Auditing Committee which shall review the accounts presented by the Treasurer. The approval of the Treasurer's books by the committee shall be required before his final report will be accepted. The Treasurer shall submit a provisional report at the Annual Meeting, and his final audit shall be accomplished not later than 30 days thereafter.

The Constitution of the GCS/SEPM was originally adopted in 1954 and was amended in 1960, 1962, 1966, 1969, 1971, 1972, 1974, and 1981. The Section was incorporated under the laws of the State of Texas in 1981, and these Bylaws were adopted at that time in place of the original Constitution and its amendments. They were amended in 1984 and 1990. These Bylaws embody all of the provisions of the original Constitution and its amendments.